

WAINFLEET

Fall Fair

**EXHIBITOR
HANDBOOK**



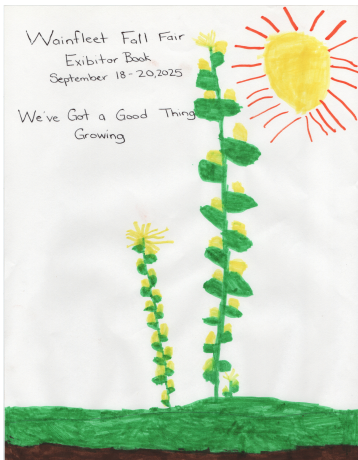
Cover Art by
Luke V. Age 10

🌐 wainfleetfallfair.com

📷 [wainfleet_fallfair](#)

📘 [wainfleetfair](#)

Submissions for the Cover Contest



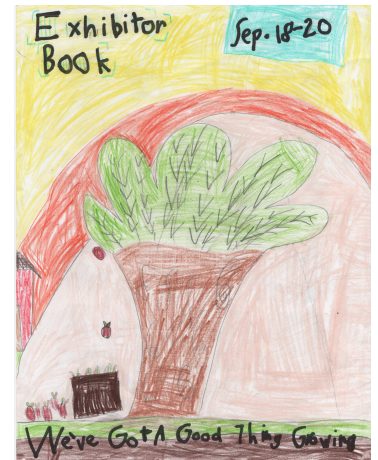
Hannah C. Age 4



Chase P. Age 5



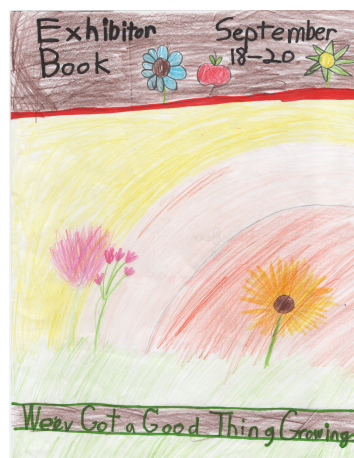
Ethan C. Age 8



Liam S. Age 8



Cassel G. Age 9



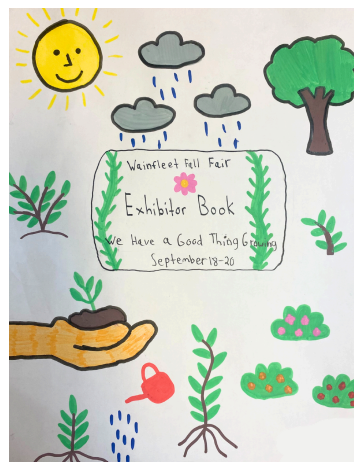
Sean S. Age 10



Owen S. Age 11



Simon V. Age 13



Aubree K. Age 13



Zach V. Age 15

Message from the President



Kelly Martindale

2025 President, Wainfleet Agriculture Society

What an incredible year it has been for the Wainfleet Agricultural Society! I am absolutely thrilled to share that this year's event broke many records—record-breaking attendance, an incredible number of exhibitor entries, especially in the children's categories, and unforgettable moments that we will all cherish for years to come.

This past year's exhibits at the Wainfleet Fall Fair were truly spectacular, showcasing the incredible talent and dedication of our community members. From mouthwatering homemade pies and canned goods to vibrant vegetables and fruits, it was a feast for the eyes and the taste buds. The beautiful flowers on display added a burst of color, while the hand-crafted projects, including intricate quilts, stunning arts and crafts, detailed woodworking, and expertly sewn creations, demonstrated the skill and creativity of our exhibitors. We are so grateful for the countless hours and hard work these talented individuals invested in creating such exceptional pieces. A special mention goes to the wonderful children's exhibits, which are always a highlight at the fair. The Children's Room was once again a big hit with fairgoers, filled with joy and imagination, and we are so thankful for the young artists and their families for sharing their amazing work with us. We are deeply appreciative of everyone's time, effort, and passion that made this year's

exhibits truly special. Our Demolition Derby was a true highlight, showcasing intense competition, heart-pounding action, and a whole lot of fun. We couldn't have asked for a better show, and it was amazing to see so many people cheering on their favorite drivers. The truck and tractor pulls were filled with diesel smoke, great competition, and Wainfleet locals battling it out for top pull, leaving the spectators at the edge of their seats waiting for another long pull or broken drive shaft. And, of course, the energy was unmatched thanks to the fantastic live music that had everyone dancing and singing along throughout the 3 days of the Fair. Kicking off the fair Thursday, the parade was packed with both attendees and floats from the Wainfleet businesses and community groups dressed up as bees and we even had floats with maple trees! Way to go Wainfleet.

The food trucks were a huge hit, serving up a variety of delicious options that kept everyone fueled and satisfied throughout the day. From savory bites to sweet treats, there was something for every taste, and we are grateful for the wonderful vendors who made it all happen.

I want to extend my deepest gratitude to our dedicated volunteers, sponsors, and exhibitors for making this event a reality. Your hard work and support truly made this year's event a standout success. Thank you to everyone who attended, supported, and made this a record-breaking year for the Wainfleet Fall Fair.

We look forward to seeing you all again in 2025 for even more fun, family-friendly activities, and community spirit.

Rules & Regulations

General Rules and Regulations for Wainfleet Fair

- a. Smoking of any kind is not allowed in the arena, buildings or on the grounds.
- b. Alcohol purchase and consumption is only permitted in designated areas. Visitors are not allowed to bring in alcohol.
- c. Recreational drug use is not permitted in the arena, buildings or on the grounds.
- d. The Wainfleet Agricultural Society reserves the right to inspect bags, coolers and back packs coming on to the grounds.
- e. Only service dogs are permitted in arena, buildings and on the grounds.
- f. All attendees, exhibitors, volunteers, vendors, entertainers and other persons attending the Wainfleet Agricultural Society Fall Fair must be respectful of the attendees, volunteers and all others on site. Should any individual(s) not comply they will be asked to leave the site. If necessary, security and/or law enforcement will be asked to assist.
- g. Vendors and Volunteers must have a Vendor or Volunteer Card (obtainable from a Director/Committee Chairperson) to enter the fairgrounds without paying the entry fee.

Rules and Regulations for Exhibitors

- a. All Exhibitor Classes and Competitions are open to residents of Niagara Region and Dunnville.
- b. No person shall make more than one entry in any section of any class, except where noted in the rules for that class.
- c. Exhibits and entry forms (where required) must be brought to the arena on Wednesday, September 17, 2025 between the hours of 2:00 and 9:00 p.m. All animals must be on the grounds by the time mentioned in that class.
- d. Space is LIMITED. Therefore, any excess exhibits (non-prize winners) may be returned to the owner and/or not exhibited in the fair.
- e. Any person misrepresenting ownership of an exhibit and/or enters an item does not follow the rules, forfeits a claim to any prize money/ ribbon awarded to the exhibitor.
- f. All exhibits must be made or grown by the exhibitor unless specified otherwise.
- g. All articles submitted in the needlework, craft or hobby classes must be clean and original to the fair.
- h. All animals shall be subject to a health inspection at the time of arrival and sick or debilitated animals shall be removed. If any one or more of the exhibits is found to be suffering from an infectious or contagious disease, the Chair or assigned Executive Board member may request that the animal be inspected by a veterinarian to verify they are not ill. Entry fee, if any, and prize money shall be forfeited.
- i. All exhibited animals must be properly secured and not allowed to run at large within the fairgrounds, or they and their handlers will be asked to leave, forfeiting any entry fee.
- j. All exhibits, displays, etc., are provided at the risk of the exhibitor. The Society will not be responsible for any loss, damage, or accident occurring to any person, animal, or property on the grounds during the fair.
- k. Exhibitors must return to pick up exhibits on Saturday after 7.30 p.m. in the Exhibit area. All exhibits must be picked up no later than 9:00 p.m. **All Exhibits must be picked up starting on Saturday at 7:30 p.m. Limited storage (not secured) will be available in the lobby of the arena. Items will be available for pickup between 8am-8pm Monday, September 22 to Thursday, September 25. After that time and date – all remaining items will be disposed of.**
- l. If an exhibitor wishes to sell an exhibit, the words "For Sale" should be on the White Exhibitor Tag. We will collect the buyer's info and pass it on to the exhibitor.
- m. The prize list is subject to correction of typographical errors and/or omissions. In case of disagreement, the Committee Chairperson's ruling shall be final.
- n. All protests must be made in writing, stating plainly the cause of complaint or appeal, signed by the complainant, and delivered to the secretary within one week of the event. The decision of the Directors will be final.

Exhibitor Numbers and Exhibit Tags

- a. Exhibitors entering listed Classes must have a current Exhibitor Number from the Wainfleet Agricultural Society to be eligible for prize money/ribbons.
- b. Adult and Secondary Student Exhibitor's numbers are \$5.00
- c. Elementary Students and Pre-Schoolers: \$2.00. Elementary Students may show in the Secondary and Adult classes by paying an additional \$3.00 to change their Elementary Student number to an Adult/Secondary Student. For entry purposes, students enter Grade Sections according to Grade as of September in the current year.

Rules & Regulations

- d. Exhibitor number tickets information (name, address, phone number, email address) must be entered into the database by exhibitor or by a designated person. All fields must be completed.
- e. The Exhibitor Number Card must be shown for a winner (or designated person) to pick up their prize money at the Fair.
- f. The Exhibitor Number Cards will be available at the Wainfleet Farmers Market on Tuesdays in August & September until Tuesday, September 9, 2025. See our website and social media for other dates, times and locations.
- g. On Wednesday, September 17th, 2025 Exhibitor Numbers and White Exhibitor Tags will be available in the Wainfleet Arena only from 2:00 pm to 9:00 pm. Exhibit entries will not be accepted after 9:00 pm
- h. Exhibitor Numbers do not permit exhibitors to enter the fair without paying the admission fees.
- i. Eligible winning exhibits (non-perishable) that are elected to move on to the District Competition will be held by the Wainfleet Agricultural Society and taken (unless perishable or of considerable value) to the District 6 AGM to be held in November. Class Chairs of perishable or valuable items will contact the winner to pick up the entry prior to the District 6 AGM.

Judging takes place in the Arena and Pavilion until 3:00 pm on the Thursday the Fair starts.

- a. No unauthorized personnel will be allowed in the arena or pavilion while the judging takes place.
- b. Any person who shall attempt to interfere with or influence the judges while in the discharge of their duties or shall at any time on the premises use any contemptuous or abusive language to any judge in the consequences of any award made to the exhibitor, shall forfeit their right to any prizes which they might otherwise be entitled to and shall be excluded from exhibiting for 1 year thereafter. Judges are requested to immediately report any breach of this rule.
- c. No animal or article shall receive a prize unless deemed worthy by the judge.
- d. Only one exhibit be entered per section, unless otherwise indicated in the Class specific rules.
- e. It will be the decision of the judge as to whether it is worthy of any prize at all. The judge's decision is final.
- f. The point system for judging will be used: 1st – 3 points, 2nd – 2 points, 3rd – 1 point and 4th - ½ point
- g. No prize money will be awarded to articles which are non-compliant with the rules.

Payout of Prize Money

- a. Prize money will be available near the Wainfleet Fall Fair Office starting Saturday, from 3:00 pm until the close of the Arena at 9:00pm.
 - Winners **must** bring their Exhibitor Number card to the office. The Treasurer or designate will review the prizes won by that number and pay the individual the monies won.
 - The Exhibitor or designate must show the Exhibitor Number Card in order to pick up winnings.
 - Some prizes may be distributed by the Class Chair.
- b. Prize monies not picked up on Saturday can be picked up on October 8th (before the regular meeting of the Wainfleet Agricultural Society) between 5:00 and 7:00pm at the Seniors Room in the arena.
- c. Cash Prizes not picked up after the October meeting will be considered a donation to the Fair
- d. The Exhibitor with the highest number of points in the Fair will be awarded \$50.00 from the Wainfleet Agricultural Society.

The following Exhibits must remain on site for the duration of the fair:

Class A - Food
Class B - Canning
Class C - Elementary School Hobbies, Crafts & Photography
Class CC - Creative Corner
Class F - Flowers

Class G - Grain, Hay & Sunflowers
Class O - Vegetables
Class P - Fruits
Class R - Eggs, Honey & Maple Syrup
Class X - Poultry & Rabbits



Class A - Food



Chairperson: Kelly Martindale president@wainfleetfallfair.com

General Rules

- Read and adhere to Rules and Regulations of the Fair
- Food should be sealed in leak proof plastic e.g. ziplock bags
- All entries must be tagged with a proper tag, secured to each entry
- In categories where there are 6 entries or more, there will be a fourth prize

Preschool, Elementary and Secondary School Specific Rules

- Students enter in your grade section only as of September of the Fair
- Exhibits must be made by entrant

Adult Specific Rules

- No manufactured or prepared mixes or pie fillings unless specified
- No whipped cream. Whipped topping may be used.
- Students may enter any adult class provided they have an adult exhibitor pass

PRE-SCHOOLS ONLY

Prizes: 1st \$4.00, 2nd \$3.00, 3rd \$2.00, 4th \$1.00

A1PS	Cereal on a paper plate, any design, glued down	A4PS	A decorated sugar cookie
A2PS	Homemade trail mix, ex. raisins, cereal, pretzels, M&M's	A5PS	A marshmallow animal
A3PS	A coloured hardboiled egg	A6PS	A dressed up hot dog, not edible
		A7PS	A character made of fruit or vegetables grown in your garden

KINDERGARTEN TO GRADE 4

Prizes: 1st \$4.00, 2nd \$3.00, 3rd \$2.00, 4th \$1.00

A1EL	2 cereal squares	A10EL	A dirt dessert in a cup
A2EL	2 peanut butter cookies	A11EL	A marshmallow character, need not be edible
A3EL	Create and decorate an unusual cookie	A12EL	2 Decorated crackers, all edible
A4EL	A decorated cupcake	A13EL	Homemade trail mix, any mixture
A5EL	A decorated ice cream cone	A14EL	1 Decorated hardboiled egg
A6EL	A small veggie tray	A15EL	Dressed up hot dog, need not be edible
A7EL	2 muffins, may be from a mix	A16EL	A favourite after school snack
A8EL	A piece of candy jewelry	A17EL	Your favourite breakfast on a plate
A9EL	A small pickle tray	A18EL	A cheese and cracker tray

GRADES 5 TO 8

Prizes: 1st \$4.00, 2nd \$3.00, 3rd \$2.00, 4th \$1.00

A19EL	2 Chocolate chip cookies, no nuts <i>*Winner may advance to District 6 Competition</i>	A30EL	1 Decorated hard-boiled egg
A20EL	2 Cereal squares	A31EL	1 Hot dog ready to eat, most interesting toppings
A21EL	2 Brownies, may be from mix	A32EL	1 Personal dessert pizza
A22EL	A piece of edible jewelry	A33EL	A picture of a farm animal made from cereal glued on a paper plate
A23EL	2 Iced cupcakes	A34EL	2 Crackers and cheese Hors d'oeuvres
A24EL	1 "ugly" cake, iced - make it as ugly as you can	A35EL	A bag of seasoned popcorn, any seasoning
A25EL	2 Muffins, may be from mix/paper baking cups	A36EL	2 Candy kabobs - any type of candy
A26EL	A character made from candies	A37EL	A caramel apple
A27EL	A veggie tray	A38EL	A favourite after school snack
A28EL	A pickle tray	A39EL	A character made from something grown in your garden
A29EL	A recipe made with something grown in your garden		



Class A - Food



Chairperson: Kelly Martindale president@wainfleetfallfair.com

SECONDARY

Prizes: 1st \$4.00, 2nd \$3.00, 3rd \$2.00, 4th \$1.00

1SE	2 Molded chocolates	9SE	2 Slices of banana bread
2SE	2 Iced brownies	10SE	Stuffed pita pocket
3SE	2 Brownies, can be from mix	11SE	Pinwheel sandwiches, 3 pieces
4SE	1 Dessert with honey in recipe, include recipe	12SE	Decorative pickle tray
5SE	2 Chocolate chip cookies	13SE	1 Serving of chili
6SE	2 Oatmeal cookies	14SE	1 Serving of spaghetti
7SE	1 Serving apple crisp	15SE	1 Pizza skewer
8SE	2 Rice Krispy squares with decorated tops	16SE	1 Fresh vegetable tray

SPECIAL

Prize \$10.00

17SE Top Point Winner in Secondary Section

ADULTS

YEAST DOUGHS Submit half loaves to reduce food waste. Please seal in plastic bags

Prizes: 1st \$7.00, 2nd \$6.00, 3rd \$5.00, 4th \$1.00

1FO	Half a loaf whole wheat bread	3FO	Half a loaf no knead bread
2FO	Half a loaf white bread		

PASTRY Minimum 8-inch pies in aluminum pie plate

Prizes: 1st \$7.00, 2nd \$6.00, 3rd \$5.00, 4th \$1.00

4FO	Bumbleberry pie, with 3 types of berries	7FO	Raisin pie
5FO	Strawberry rhubarb pie	8FO	Peach pie
6FO	Blueberry pie	9FO	Apple pie

CAKES 1 Large serving piece of cake for 10FO - 12FO

Prizes: 1st \$7.00, 2nd \$6.00, 3rd \$5.00, 4th \$1.00

10FO	Iced white cake	12FO	Any other variety of cake
11FO	Iced chocolate cake		

MISCELLANEOUS Please package on small plates

Prizes: 1st \$7.00, 2nd \$6.00, 3rd \$5.00, 4th \$1.00

13FO	3 Cheese biscuits	15FO	3 Slices quick bread any other variety ex. lemon/pumpkin loaf
14FO	3 Slices of zucchini loaf	16FO	3 Raisin bran muffins

SPECIAL

Prizes: 1st \$25.00, 2nd \$6.00, 3rd \$5.00, 4th \$1.00

17FO Butter tart competition - 6 full size tarts, no fruit, no nuts
* Winner may advance to the District Competition



Class A - Food



Chairperson: Kelly Martindale president@wainfleetfallfair.com

18FO 1 Serving apple crisp
19FO 3 Blueberry muffins, no papers
20FO 3 Decorated cupcakes, no papers,
judged by decoration ONLY
21FO 3 Date squares
22FO 3 Gluten free cookies

23FO 3 Shortbread cookies
24FO 3 Brownies with nuts
25FO 3 Oatmeal raisin cookies
26FO 3 Peanut butter cookies
27FO 3 Chocolate chip cookies
28FO 3 Vegan cookies

SPECIAL

Prize \$10.00

29FO Top Point Winner in Miscellaneous Section

CANDY

Prizes: 1st \$7.00, 2nd \$6.00, 3rd \$5.00, 4th \$1.00

30FO 5 Molded chocolates
31FO 5 Pieces almond bark
32FO Dry snack mix (nuts & bolts) in
attractive container

33FO 3 Chocolate dipped strawberries
34FO 5 Pieces chocolate fudge, no nuts

SPECIAL

Prize \$10.00

35FO Top Point Winner in Candy Section

SUPPER DISHES

Prizes: 1st \$7.00, 2nd \$6.00, 3rd \$5.00, 4th \$1.00

36FO 1 Serving meatless chili
37FO Serving scalloped potatoes

38FO 1 Serving of your favourite pot luck
casserole dish, include recipe
39FO 1 Serving baked beans

SPECIAL - FAIR THEME

Prize \$25.00

40FO Any baking that includes something home grown in the recipe (please include a copy of recipe)

DIABETIC COOKING

Prizes: 1st \$7.00, 2nd \$6.00, 3rd \$5.00, 4th \$1.00

41FO 3 Diabetic cookies
42FO 1 Serving special breakfast meal for those
with diabetes

43FO 1 Serving snack for those with
diabetes
44FO 1 Serving dessert for those with diabetes



Class A - Food



Chairperson: Kelly Martindale president@wainfleetfallfair.com

INDIVIDUAL DONOR FOOD SPECIALS

- Judging starts at 8:30 pm on Wednesday, September 17, 2025
- Specials to be judged by the Prize Donors, who retain 1st prize winning entries.
- Pies must be in standard aluminum pie plates.

Prizes: 1st as donated, 2nd \$4.00, 3rd \$3.00

45FO	Homemade macaroni & cheese with recipe enclosed Prize \$10.00 Donated by Liz Aldrey	54FO	6 Good sized blueberry muffins Prize \$10.00 Donated by Mark Lambert
46FO	Banana layer cake with nuts Prize \$10.00 Donated by Lisa Clark in memory of Glen Coverdale	55FO	Lemon Pie Prize \$15.00 Donated by Owen Grabell
47FO	8 Good sized butter tarts with nuts and raisins Prize \$10.00 Donated by Morris Coverdale in memory of Glen Coverdale	56FO	1 Dozen coconut haystacks Prize \$10.00 Donated by Mark Lambert
48FO	Peach pie Prize \$15.00 Donated by Matthew Roszell	57FO	1 Pan of corn bread Prize \$10.00 Donated by Danielle Carmichael
49FO	Banana cream pie Prize \$15.00 Donated by Sid Grabell	58FO	Apple crisp Prize \$10.00 Donated by Frank deRuyte
50FO	2 Large Oatmeal Chocolate Chip Cookies Prize \$15.00 Donated by Luke Martindale	59FO	Date squares Prize \$10.00 Donated by Ted Augustine
51FO	Pumpkin pie Prize \$15.00 Donated by Eileen Grabell	60FO	Chocolate bar flavoured cheesecake Prize \$20.00 Donated by Seth Reker
52FO	Baked cheesecake, any flavour Prize \$10.00 Donated by Donna Grabell	61FO	Strawberry rhubarb pie Prize \$15.00 Donated by Cecil Reker
53FO	Carrot cake with cream cheese icing Prize \$15.00 Donated by Len Mc Ewan	62FO	Rhubarb upside down cake Prize \$15.00 Donated by Bambi Reker
		63FO	Rhubarb pie Prize \$15.00 Donated by Donna Grabell
		64FO	Apple pie Prize \$15.00 Donated by Chloe Grabell

SPECIAL - MAYOR'S HOMEMADE PIZZA CONTEST

Prize \$25.00

65FO Any toppings on a pizza made of home made crust that will be judged by Mayor's Panel



Class B - Canning



Chairperson: Kelly Martindale president@wainfleetfallfair.com

General Rules

Warning: Canned foods that have been opened have serious potential to grow bacteria and micro-organisms. Discard opened jars of food when you take them home after the Fair. Be safe rather than sorry.

- All canning must be in 250ml or 500ml jars with rings and lids with the exceptions of: jams and jellies (125ml or 250ml mason-type jars with rings and lids – no wax); salsa, apple sauce, and relishes may be in 250ml jars with rings and lids. No recycled jars, e.g., mayonnaise jars.
- All jars are to be free of mold and sealed (except for freezer jam)

GRADES 5-8

Prizes: 1st \$4.00, 2nd \$3.00, and 3rd \$2.00

- 1ECN 1 Jar of peaches
- 2ECN 1 Jar of freezer jam
- 3ECN 1 Jar of dill pickles

SECONDARY

Prizes: 1st \$4.00, 2nd \$3.00, and 3rd \$2.00

- 1SCN 1 Jar dill pickles
- 2SCN 1 Jar of salsa
- 3SCN 1 Jar of cooked jam
- 4SCN 1 Jar freezer jam

SPECIAL

Prize \$10.00

- 5SCN Top point winner in Secondary Canning Section.

ADULT

Prizes: 1st \$4.00, 2nd \$3.00, and 3rd \$2.00

- | | | | |
|------|---------------------------------|------|------------------------------|
| 1CN | Peaches | 14CN | Cooked peach jam |
| 2CN | Pears | 15CN | Strawberry jam |
| 3CN | Applesauce | 16CN | Cooked plum jam |
| 4CN | Jelly - any variety, labelled | 17CN | Cooked 2 fruit jam, labelled |
| 5CN | Corn relish | 18CN | Citrus marmalade |
| 6CN | Chili sauce | 19CN | Zucchini relish |
| 7CN | Stewed tomatoes, can be 1 litre | 20CN | Pickled beets |
| 8CN | Tomato juice | 21CN | Sweet pickles |
| 9CN | Spaghetti sauce, meatless | 22CN | Dill pickles |
| 10CN | Salsa | 23CN | Bread & butter pickles |
| 11CN | Freezer raspberry jam | 24CN | Cucumber relish |
| 12CN | Freezer strawberry jam | 25CN | Pepper jelly |
| 13CN | Cooked raspberry jam | 26CN | Any other canned fruit/jam |
| | | 27CN | Any other canned pickles |

SPECIAL

Prize \$10.00

- 28CN Top point winner in Adult Canning Section

INDIVIDUAL DONOR CANNING SPECIALS

- 29CN Pickled Beets

Prize \$10.00 Donated by Jessica Rooker

- 30CN Hot mix - please include cauliflower and carrots

Prize \$10.00 Donated by Luke Martindale



Class C - Elementary School Hobbies, Crafts & Photography



Chairpersons: Rebecca Mazur 905-380-5532 & Kim Skene 289-442-7142

General Rules

- All hobbies and crafts must be recent and unsoiled work of the exhibitor
- Class C is located in the Moore Room
- Please supply means of attaching tag to article (pin, string, tape, etc.)
- Articles must be left on exhibit until 8:00 p.m. Saturday night
- An original painting or sketch means starting with a blank canvas. No paint by number kits, unless specified
- Articles may not be removed by the Exhibitor but must be removed by a Committee Member or Authorized Person
- Only articles never entered in previous years
- **Please write name of school and age of child (Exhibitor) on top right corner of tag**

HOBBIES & CRAFTS

PRE-SCHOOL

Prizes: 1st \$4.00, 2nd \$3.00, 3rd \$2.00, 4th \$1.00

Please put child's age on the top righthand corner of entry tag

- 1EL Draw and paint a garden
2EL Stamp art of your choice
3EL Finger painting of a flower

- 4EL Cut and paste
5EL Hand and/or footprint scarecrow
6EL Favourite animal made with beans and/or seeds

JUNIOR & SENIOR KINDERGARTEN

Prizes: 1st \$4.00, 2nd \$3.00, 3rd \$2.00, 4th \$1.00

Please put child's age on the top righthand corner of entry tag

- 7EL Create your own flower or plant markers for the garden
8EL Decorated bird house, garden theme
9EL Decorated vase or planter
10EL Make a garden on a canvas using any materials

- 11EL Wooden spoon scarecrow
12EL Puppet made from a paper bag
13EL A drawing or painting "When I Grow Up"
14EL LEGO Creation, NOT TO EXCEED 20cm x 20cm

GRADES 1 & 2

Prizes: 1st \$4.00, 2nd \$3.00, 3rd \$2.00, 4th \$1.00

Please put child's age on the top righthand corner of entry tag

- 15EL Create your own Pokemon card
16EL Sand art, bottle or canvas
17EL Origami art
18EL A "We've got a Good Thing Growing" themed bookmark made with any materials
19EL A haunted house made with a milk carton
20EL An Easter bonnet
21EL Christmas snow globe
22EL Newspaper artwork

- 23EL Decorated bird house, garden theme
24EL Clay pot scarecrow
25EL Grass head character made with nylon
26EL Best dressed Barbie or Superhero, using physical doll/figure
27EL Seed and/or bean mosaic
28EL A drawing or painting "When I Grow Up"
29EL LEGO Creation, NOT TO EXCEED 20cm x 20cm
30EL Any artwork done during your school year

SPECIAL

Prize \$25 Walmart gift card. Winner chosen by the judge. Donated by Student Transportation of Canada (STC) Niagara.

- 31EL Homemade Canada Flag made with any materials



Class C - Elementary School Hobbies, Crafts & Photography



Chairpersons: Rebecca Mazur 905-380-5532 & Kim Skene 289-442-7142

GRADES 3, 4 & 5

Prizes: 1st \$4.00, 2nd \$3.00, 3rd \$2.00, 4th \$1.00

Please put child's age on the top righthand corner of entry tag

- | | | | |
|------|--|------|---|
| 32EL | Miniature zen garden | 41EL | Grass head character made with nylon |
| 33EL | Origami art | 42EL | 3D art made with any materials |
| 34EL | A drawing or painting "When I Grow Up" | 43EL | Robot made from a tissue box |
| 35EL | Best dressed Barbie or Superhero, using physical doll/figure | 44EL | Create an animal using a pinecone |
| 36EL | A haunted house made from a milk carton | 45EL | Fruit(s) and/or vegetable(s) made from clay |
| 37EL | Christmas snow globe | 46EL | LEGO Creation, NOT TO EXCEED 20cm x 20cm |
| 38EL | An Easter bonnet | 47EL | Sand art, bottle or canvas |
| 39EL | Clay pot scarecrow | 48EL | Any artwork done during school year |
| 40EL | Create your own Pokemon card | | |

SPECIAL

Prize \$25 Walmart gift card. Winner chosen by the judge. Donated by Student Transportation of Canada (STC) Niagara.

- 49EL Homemade Canada Flag made with any materials

GRADES 6, 7 & 8

Prizes: 1st \$4.00, 2nd \$3.00, 3rd \$2.00, 4th \$1.00

Please put child's age on the top righthand corner of entry tag

- | | | | |
|------|---|------|--|
| 50EL | Miniature zen garden | 60EL | Decorated tin can planter |
| 51EL | Origami art | 61EL | Decorated bird house, garden theme |
| 52EL | 3D art made with any materials | 62EL | A drawing or painting of a garden |
| 53EL | Clay pot scarecrow | 63EL | Your favourite sport - decorated picture frame |
| 54EL | A haunted house made from a milk carton | 64EL | Splatter painting |
| 55EL | Christmas snow globe | 65EL | LEGO Creation, NOT TO EXCEED 20cm x 20cm |
| 56EL | An Easter bonnet | 66EL | Any artwork done during school year |
| 57EL | Sand art, bottle or canvas | | |
| 58EL | Diamond bead artwork | | |
| 59EL | Flower/garden mobile | | |

SPECIAL

Prize \$25 Walmart gift card. Winner chosen by the judge. Donated by Student Transportation of Canada (STC) Niagara.

- 67EL Homemade Canada Flag made with any materials

POSTER CONTEST

Prizes: 1st \$15.00, 2nd \$10.00 & 3rd \$5.00

A contest to create the poster that best promotes the theme for Wainfleet Fall Fair – We've Got a Good Thing Growing

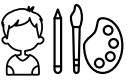
Rules for Poster Contest:

- The theme must be We've Got a Good Thing Growing
- The date of the fair must be present on the poster
- The poster must be hand drawn (no computer graphics or magazine cut-outs!)
- The poster must be a minimum – approximately 22cm X 28cm, without border Maximum – approximately 28cm X 44cm, without border
- Must be a student of a Wainfleet or Port Colborne School and have a current Exhibitors' Number (\$2.00)
- Poster must not have been entered in previous years
- Posters must be submitted through the schools and will be pre-selected by the Teachers to the Top 3 entries per grade and only these pre-selected posters will be judged for the contest. All other posters will be accepted, and the Fair will attempt to display as many as possible based on available space. (No guarantee is given that the poster submitted will be displayed). All entries will be judged based on their overall appearance, originality and clarity of the theme.

- 68EL Poster Grade JK - Grade 4 (as of September 2025)
69EL Poster Grade 5 - Grade 8 (as of September 2025)



Class C - Elementary School Hobbies, Crafts & Photography



Chairpersons: Rebecca Mazur 905-380-5532 & Kim Skene 289-442-7142

PHOTOGRAPHY

GRADES 1 & 2

Prizes: 1st \$4.00, 2nd \$3.00, 3rd \$2.00, 4th \$1.00

All snapshots must be mounted on Bristol board with a maximum 2.5cm border and be taken by the person entering.

70EL Grown in Canada

71EL Sunset/sunrise

72EL Scarecrow

GRADES 3, 4 & 5

Prizes: 1st \$4.00, 2nd \$3.00, 3rd \$2.00, 4th \$1.00

All snapshots must be mounted on Bristol board with a maximum 2.5cm border and be taken by the person entering.

73EL Grown in Canada

74EL Sunset/sunrise

75EL Scarecrow

GRADES 6, 7, & 8

Prizes: 1st \$4.00, 2nd \$3.00, 3rd \$2.00, 4th \$1.00

All snapshots must be mounted on Bristol board with a maximum 2.5cm border and be taken by the person entering.

76EL Grown in Canada

77EL Sunset/sunrise

78EL Scarecrow

SPECIAL - ANNUAL MAYOR'S GREETING CARD CONTEST

Prizes: 1st \$20, 2nd \$10, 3rd \$5 Entries will be judged by Town Council

Design a greeting card for the Mayor to reproduce and use as a Holiday Greeting Card. Use any media that is easily reproduced (e.g. crayon, pencil crayons, markers, paints etc.). By entering the contest, you consent to the use of your artwork by the Wainfleet Township. Full Address is required to participate in the contest.

79EL JK - Grade 3 (as of September 2025)

80EL Grade 4 - Grade 8 (as of September 2025)

4-H Educational Display Exhibits

Chairpersons: Rebecca Mazur 905-380-5532 & Kim Skene 289-442-7142

All exhibit entries must be brought to the Arena on Wednesday between 2 p.m. and 9 p.m.

Entries will not be accepted after this time. Where: The Arena Purpose: To stimulate interest as well as encourage junior activities in Wainfleet & Port Colborne. To improve the educational value of the Fall Fair.

Prizes: 1st \$50.00, Each educational display will receive equal recognition of \$20.00 each

Rules for Poster Contest:

- The general Rules and Regulations apply to this class.
- 4-H Club executive must purchase an Exhibitor Number (in the lobby of the Arena) and fill out an entry form, on the delivery of their display. One number per club
- Each club will indicate its club name and the topic of its display by an accompanying poster.
- Space available will be approximately 30" square. Displays to be brought to the Arena on Wednesday, September 17, 2025 between 2:00 p.m. & 9:00 p.m.
- Displays are to be picked up on Saturday after 8:30 p.m. Displays cannot be removed before this time.
- Each exhibit will be judged, and ribbons awarded for best displays. The winning entry will receive a special award of \$50.00 donated by the Wainfleet Agricultural Society. Each educational display will receive equal recognition of \$20.00 each



Class CC – Creative Corner

Formerly Classes E&H and Class N



Chairperson: Sylvia Kenyon sylvia.wainfleetfair@gmail.com

General Rules

- All items must be original to this Fair, unsoiled, show no wear and be the work of the exhibitor only (except where noted)
- Have the white exhibitor tag filled in and securely attached to the item when submitting Wednesday from 2 to 9 p.m.
- All entries must be tagged with a proper tag, secured to each entry
- Exhibits must be left until the announced pickup time Saturday evening; exhibitor card must be shown to pick up. The Fair is not responsible for items not picked up.
- One entry per CC#
- Judges' decisions are final
- Items meant to be hung must have hangers attached
- Glue generally not allowed with items sewn, quilted, knitted, crocheted, or embroidered items
- If you wish to sell an item mark the price on the inside of the exhibitor tag. We will collect buyers' info and pass it on to you. We will not take part in the selling process other than collecting contact information.

PERSONS WITH DISABILITIES *Disability means a person with a condition that affects the skill level of a craft.*

Prizes: 1st \$5.00, 2nd \$4.00, 3rd \$3.00

CC1	Item crafted from recycled paper	CC7	Selfie showing a happy face
CC2	A collage with the theme "We've Got a Good Thing Growing"	CC8	Any item listed before the Adult section . A1 must be entered on the tag after the CC# when submitting items in order to be judged in this category.
CC3	An original piece of jewelry		
CC4	A painted rock doorstopper		
CC5	Mounted jigsaw puzzle		
CC6	4 Photographs, Exhibitors' choice of theme, mounted on Bristol Board		

SPECIAL

Prize \$20.00 Donated by the Nadeau Family, in memory of Amy Nadeau

CC9P Highest Point winner in Disability Category

CHILDREN AGES 4 & 5

Prizes: 1st \$5.00, 2nd \$4.00, 3rd \$3.00

Some glue allowed in CC10-CC13 but must have some sewing

CC10	Animal/toy made from a sock	CC12	Bean bag
CC11	Bookmark made from felt	CC13	Hand sew at least 3 buttons on felt/fabric

CHILDREN AGES 6 & 7

Prizes: 1st \$5.00, 2nd \$4.00, 3rd \$3.00

Some glue allowed in CC14-CC18 but must have some sewing

CC14	Animal made from a sock	CC17	Vegetable or fruit sewn/knit or crocheted
CC15	A beanbag	CC18	Decorative cushion , any size
CC16	Dream Catcher, maximum size 12"		



Class CC – Creative Corner

Formerly Classes E&H and Class N



Chairperson: Sylvia Kenyon sylvia.wainfleetfair@gmail.com

CHILDREN AGES 8 TO 13

Prizes: 1st \$5.00, 2nd \$4.00, 3rd \$3.00

All entries that are sewn, knitted or crocheted must not include glue

- | | | | |
|------|-------------------------------------|------|--|
| CC19 | Stuffed animal or toy | CC26 | Scarf knitted or crocheted |
| CC20 | Decorative cushion, any size | CC27 | Sleepwear, ex. pj pants, nightgown etc. |
| CC21 | Hair accessory | CC28 | Reusable tote bag |
| CC22 | One potholder or hot pad | CC29 | Cover for an electronic item, ex. phone, tablet, ereader |
| CC23 | Dishcloth, knitted or crocheted | CC30 | 2 Placemats |
| CC24 | Handcrafted Christmas tree ornament | CC31 | Dreamcatcher, any size |
| CC25 | Handcrafted Halloween item | | |

SPECIAL OPEN TO ALL ELEMENTARY STUDENTS

Prizes: 1st \$20.00, 2nd \$10.00, 3rd \$5.00 *Donated by Stockroom Supply Tools*

- CC32P Open woodworking project. Projects could include cub cars, bird houses, cutting boards, etc.
Judging based on workmanship and creativity!

SECONDARY SCHOOL STUDENTS

ARTWORK

Prizes: 1st \$5.00, 2nd \$4.00, 3rd \$3.00

- | | | | |
|------|------------------------------|------|--|
| CC33 | A Pencil sketch | CC35 | A painting using acrylic, oil or water mediums |
| CC34 | Original sketch for a tattoo | | |

DESIGN & DECOR

Prizes: 1st \$5.00, 2nd \$4.00, 3rd \$3.00

- | | | | |
|------|--|------|---|
| CC36 | Handmade outdoor decorative item for door, porch or yard, maximum dimension 20" width, height can vary, no wreaths | CC39 | Handcrafted table centerpiece |
| CC37 | Handmade wreath for the door, any media | CC40 | Decorative item made from natural or recycled materials ex. rocks, twigs, plastic |
| CC38 | Handmade wall art, any media, but not a painting | CC41 | Christmas decoration, any media |

KITS & LEGO

Prizes: 1st \$5.00, 2nd \$4.00, 3rd \$3.00

- | | | | |
|------|---|------|---|
| CC42 | Model of an airplane or car. Must be completely finished including paint or decals. Maximum dimension 12" in any plane. Not Lego. | CC44 | LEGO Kit, any item not more than 12" in any plane |
| CC43 | Miniature Room | CC45 | LEGO, item made by exhibitor not from a kit. No more than 12" in any plane. |



Class CC – Creative Corner

Formerly Classes E&H and Class N



Chairperson: Sylvia Kenyon sylvia.wainfleetfair@gmail.com

FABRIC & YARN

Prizes: 1st \$5.00, 2nd \$4.00, 3rd \$3.00

CC46	Scarf, knit or crochet	CC50	Quilted or sewn placemat/table runner
CC47	Amigurumi figure	CC51	Article made from recycled denim
CC48	Pencil case or makeup bag with zipper	CC52	Polar fleece item
CC49	Computer, e-reader or phone case	CC53	Sleep pants
		CC54	Decorative cushion, any size

SPECIAL

Prize: \$10.00 Gift Certificate Donated by FABRICLAND Welland

CC55P Top point winner in Secondary School Fabric/Yarn

Mixed Media

Prizes: 1st \$5.00, 2nd \$4.00, 3rd \$3.00

Item made from more than one medium (your choice of two or more media in the item e.g. fabric & button, felt & ribbon, fabric & embellishments of any kind)

CC56	Handcrafted farm animal	CC59	Handmade item of jewelry
CC57	A handmade bookmark	CC60	Fidget blanket for child
CC58	Item made from sewing room scraps, no quilts	CC61	Handcrafted baby or child's toy
CC62	Any item in the Adult category. If you wish to have it compete in this age group enter AI after the CC # entered on the exhibitor card. If no notation it will compete in the Adult category but will require an adult exhibitor tag.		

AGES 14 AND UP

BUSY NEEDLES CORNER/KNITTING, CROCHETING

Prizes: 1st \$5.00, 2nd \$4.00, 3rd \$3.00

CC63	Knitted afghan	CC70	Bed socks / slippers with anti-slip feature
CC64	Crocheted afghan, not granny squares	CC71	Decorative cushion, any size
CC65	Crocheted afghan, granny squares	CC72	1 Pair of knitted socks
CC66	Knitted or crocheted bed spread, single size minimum, perimeter 262"	CC73	Hand knit adult sweater
CC67	Kitchen hot pad and dish cloth	CC74	Machine knit child, up to 14 yrs, sweater
CC68	Lap blanket, maximum perimeter 200"	CC75	Baby blanket crocheted, minimum perimeter 190 "
CC69	Shawl	CC76	Baby blanket knitted, minimum perimeter 190 "

SPECIAL

Prize: \$10.00 Gift Certificate Donated by FABRICLAND Welland

CC77P Top point winner in Busy Needles Corner



Class CC – Creative Corner

Formerly Classes E&H and Class N



Chairperson: Sylvia Kenyon sylvia.wainfleetfair@gmail.com

QUILTS

Prizes: 1st \$5.00, 2nd \$4.00, 3rd \$3.00

A quilt that measures at least 364 inches on the perimeter and is a winner here, may be selected go to the OAAS competition. It must be hand or domestic machine quilted. Any size quilt (except where specified) may be entered in the Wainfleet Fair. All quilts must be pieced and quilted by the exhibitor (except where noted).

- | | | | |
|------|---|------|--|
| CC78 | Pieced quilt, domestic machine quilted | CC88 | 1 quilt top not sandwiched or quilted, may be entered next year completed |
| CC79 | Pieced quilt, longarm quilted | CC89 | Quilt made from fabric scraps |
| CC80 | Pieced quilt, hand quilted | CC90 | Art Quilt/Wall Hanging – An Art Quilt is a quilt style that deviates from the use of traditional, historical blocks and patterns. The emphasis is on the design rather than functionality. |
| CC81 | Pieced quilt, tied | CC91 | Modern Quilt, any size- using a mix of, bold colour, negative space, off grid layout, improvisational quilting, block scale and/or no rules quilting. |
| CC82 | Applique quilt, domestic machine quilted | | |
| CC83 | Applique quilt, hand quilted | | |
| CC84 | Applique quilt, longarm quilted | | |
| CC85 | Any technique group quilt worked by two or more people | | |
| CC86 | Lap quilt, maximum perimeter 200" | | |
| CC87 | 1 quilt block, named and mounted, not quilted, maximum size 16" | | |

SPECIAL

Prize: \$15.00 Gift Certificate

Donated by FABRICLAND Welland

CC92P Top point winner in Quilts Section

EMBROIDERY & NEEDLEWORK

Prizes: 1st \$5.00, 2nd \$4.00, 3rd \$3.00

- | | | | |
|------|--|-------|--|
| CC93 | 2 Bibs, machine embroidered | CC98 | Item of punch needle embroidery |
| CC94 | Hand embroidered decorative pillow | CC99 | Needle felting figure |
| CC95 | Hand embroidered table runner | CC100 | A picture done in counted cross stitch or needlepoint, ready to hang |
| CC96 | Item done in cross stitch (not framed) | CC101 | Smocked item |
| CC97 | Item done in needlepoint, not framed | | |

PAPER ARTS

Prizes: 1st \$5.00, 2nd \$4.00, 3rd \$3.00

- | | | | |
|-------|---|-------|---|
| CC102 | A single or double page scrap book layout. Pictures can be omitted or covered if exhibitor wishes | CC105 | Cover and at least 4 pages from a journal or planner |
| CC103 | Mini album, album cover can be purchased or constructed by the Exhibitor | CC106 | Embossed card or invitation |
| CC104 | Mixed media artwork composed from a combination of different media or materials, paper based, maximum size 20 " X 20" | CC107 | Card or invitation using combination of techniques, ex. BetterPress, foiling, wax seals |
| | | CC108 | Origami bird not more than 6" in any direction |

SPECIAL

Prize: Package of handcrafted cards **Donated by Stamplicity Port Colborne**

CC109P Top point winner in Paper & Printing Arts



Class CC – Creative Corner

Formerly Classes E&H and Class N



Chairperson: Sylvia Kenyon sylvia.wainfleetfair@gmail.com

PENMANSHIP

SPECIAL

Prize: 1st \$25.00, 2nd \$15.00, 3rd \$10.00 Donated by Sharon McMillan

CC110P Penmanship, not calligraphy, submission in ball point pen or pen and ink, mounted on firm surface maximum size 8.5" X 11"

In cursive, write this verse Agriculture, by Maya Anthony

*Beneath a sunlit, azure dome,
Each seed finds earth, its sacred home,
With hope in heart and faith in hand,
The sower walks across the land.*

*Into the furrows, deep and wide,
Life's mysteries quietly reside.
With every toss, a future dream,*

*In every grain, a hidden gleam.
For the tiniest of sews,
A mighty tree or flower grows.
The dance of life begins anew,
With every dawn and morning dew.*

FABRIC

Prizes: 1st \$5.00, 2nd \$4.00, 3rd \$3.00

- CC111 2 Placemats
- CC112 Sewn hot pad
- CC113 Decorative cushion, any size
- CC114 Sewn child's toy
- CC115 Table topper, minimum 12" diameter
- CC116 Reusable tote bag
- CC117 Pair of sewn slippers with anti-slip feature
- CC118 Hat
- CC119 Item of pet clothing
- CC120 Microwave item, ex. bowl cozy, heat pack

- CC121 Item made with fabric scraps, no quilts
- CC122 Infants sewn dress
- CC123 Diaper bag
- CC124 2 Baby bibs
- CC125 Item of infant or child sleepwear
- CC126 1 Item of adult clothing, female
- CC127 1 Item of adult clothing, male
- CC128 Felted item. This is not felt purchased from a craft store, this is usually wool that has been shrunk/matted

SPECIAL

Prize: \$10.00 Gift Certificate Donated by FABRICLAND Welland

CC129P Top point winner in Fabric Section

MIXED MEDIA

Prizes: 1st \$5.00, 2nd \$4.00, 3rd \$3.00

Your choice of two or more media in the item e.g. fabric & button, felt & ribbon, fabric and embellishments of any kind

- CC130 A handmade gift card holder
- CC131 A handmade card/postcard for a special occasion, not birthday or Christmas

- CC132 A handmade card/postcard, get well theme
- CC133 A handmade card/postcard, birthday theme
- CC134 A handmade luggage tag



Class CC – Creative Corner

Formerly Classes E&H and Class N



Chairperson: Sylvia Kenyon sylvia.wainfleetfair@gmail.com

- CC135 A handmade bookmark
- CC136 Fidget blanket for Senior
- CC137 Decorative cushion, any size
- CC138 Handmade pair of earrings

- CC139 Handmade bracelet or necklace
- CC140 Handmade doll or animal
- CC141 Dream Catcher, maximum size 18"
- CC142 Hostess gift, maximum size 18"

PHOTOGRAPHY

Prizes: 1st \$5.00, 2nd \$4.00, 3rd \$3.00

All photos to be taken by the exhibitor and must be mounted on bristol board with maximum 1/2inch space around. Photos should be 4x6 or 5x7 unless otherwise stated. No computer enhancement except where noted. No AI-Photos.

- CC143 Photo of winter storm
- CC144 Photo of summer storm
- CC145 Photo of flower garden
- CC146 Photo of reflections in water
- CC147 Photo of life on the Welland Canal
- CC148 Street scene/street photography
Photo of something that typifies Niagara, ex.
barn, bridge, wine
- CC149 barn, bridge, wine
- CC150 Photo taken on the Feeder Canal
- CC151 Photo of a waterfall
- CC152 Photo of feathered wildlife
- CC153 Photo of reptile

- CC154 Photo of furry wildlife
- CC155 Photo of pet's favourite activity
- CC156 Photo in black and white
- CC157 Double exposure, in camera
- CC158 8 X 10 Portrait of a family member, no
animals
- CC159 8x10 photo exhibitor's choice,
photoshopped or digitally enhanced
- CC160 4 photos (4x6) that feature "We've Got
a Good Thing Growing", mounted on
stiff paper
- CC161 8 X 10 Scene typical of Wainfleet

OAAS PHOTOGRAPHY

Prizes: 1st \$20.00, 2nd \$16.00, 3rd \$12.00, 4th \$7.00, 5th \$5.00

Winners will be announced at the OAAS Convention in January 2026. For more information about this competition go to the OAAS website www.ontarioagsocieties.com

JUNIOR: AGES 15 AND BELOW

- CC162 Candid shot of people having fun at your fair
- CC163 Creatures and critters at your fair

- CC164 Brilliant colours at your fair
- CC165 Most unusual display at your fair

OPEN DIVISION - HUMAN INVOLVEMENT

- CC166 Youth participation at the fair, ex. exhibit, display,
ribbons won, competitions, races, etc.
- CC167 Adult/Senior involvement, ex. working, displays,
enjoying your fair
- CC168 Candid shot of children having fun at your fair
- CC169 4H Club involvement at your fair, ex. livestock,
displays
- CC170 People with creatures and critters at your fair
displays
- CC171 Most unusual display at your fair
- CC172 Homecraft at your fair, ex. displays, demonstrations

- CC173 Live action shows, ex. singers, pulls,
demos, something musical, your fair at
night
- CC174 Quilts/Handicrafts at your fair
- CC175 Display of machinery, ex. tractors,
vehicles, engines, farming equipment
Animals
- CC176 Animal show, ex. livestock show, pet show
- CC177 Live demonstrations with animals, ex.
sheep shearing



Class CC – Creative Corner

Formerly Classes E&H and Class N



Chairperson: Sylvia Kenyon sylvia.wainfleetfair@gmail.com

CC178 Reptiles/Birds/Small Animals – ex. bird show, rabbits, etc.

CC179 Proud moment, ex. winners with their ribbons

CC180 Promoting this year's fair and/or theme, ex. displays, signs, etc.

SPECIAL

Prize: \$30.00 Donated by Chris de Laat Gallery

CC181P Best Photo

ART

Prizes: 1st \$5.00, 2nd \$4.00, 3rd \$3.00

All art work to be wired and ready to hang

CC182 A pencil or charcoal sketch

CC183 A painting on a canvas in oil

CC184 A painting on a canvas in acrylic

CC185 Painting done in water colours

CC186 A "Paint Night" picture

CC187 A textured picture done in any media not listed, ex. gesso, buttons, crayons

CC188 Diamond painting

CC189 Painting or stenciling on metal, wood or glass

CC190 Painting on a farm tool, ex. saw or shovel

CC191 Adult colouring book page

CC192 Dotted art, ex. mandala

CC193 A picture done in counted cross stitch or needlepoint

CC194 Paper toll art

POTTERY & CERAMICS

Prizes: 1st \$5.00, 2nd \$4.00, 3rd \$3.00

CC195 Thrown pottery mug, hand painted or glazed

CC196 Hand built pottery mug, hand painted or glazed

CC197 Ceramic mug

CC198 Decorative item from Air Dry Clay

SPECIAL OCCASIONS: CHRISTMAS CORNER

Prizes: 1st \$5.00, 2nd \$4.00, 3rd \$3.00

CC199 Hand decorated tree ornament, ornament may be purchased

CC200 Handmade tree ornament, any media

CC201 Handmade Christmas card/postcard

CC202 Handmade Christmas character

CC203 2 Placemats

CC204 Tablecloth, minimum size 144" perimeter

CC205 Wreath

CC206 Stocking

CC207 Tree skirt

CC208 Christmas Table topper, minimum diameter 12"

CC209 Gift bag

CC210 Table runner

CC211 Wall hanging

CC212 Decorative cushion

CC213 Table centerpiece

SPECIAL

Prize: \$10.00 Gift Certificate Donated by FABRICLAND Welland

CC214P Top point winner in Christmas Section



Class CC – Creative Corner

Formerly Classes E&H and Class N



Chairperson: Sylvia Kenyon sylvia.wainfleetfair@gmail.com

SPECIAL OCCASIONS: THANKSGIVING

Prizes: 1st \$5.00, 2nd \$4.00, 3rd \$3.00

CC215 2 Placemats
CC216 Table runner
CC217 Door decoration
CC218 Wall hanging

CC219 Decorated hand or tea towel
CC220 Apron, full
CC221 Table topper, minimum diameter 12"
CC222 Table centerpiece

SPECIAL

Prize: \$10.00 Gift Certificate Donated by FABRICLAND Welland

CC223P Top point winner in Thanksgiving Section

SPECIAL OCCASIONS: HALLOWEEN HOLLOW

Prizes: 1st \$5.00, 2nd \$4.00, 3rd \$3.00

CC224 Halloween character
CC225 Trick or Treat Bag
CC226 Decorated hand or tea towel
CC227 Door decoration
CC228 Pumpkin, minimum 6"

CC229 Decorative cushion
CC230 Wall hanging
CC231 Half apron
CC232 2 Sewn placemats
CC233 Table topper, minimum diameter 12"
CC234 Handcrafted Halloween Costume

SPECIAL

Prize: \$10.00 Gift Certificate Donated by FABRICLAND Welland

CC235P Top point winner in Halloween Section

SPECIAL OCCASIONS: EASTER

Prizes: 1st \$5.00, 2nd \$4.00, 3rd \$3.00

CC236 2 Placemats
CC237 Basket
CC238 Easter Bunny
CC239 Door decoration

CC240 Decorated tea towel
CC241 Decorative cushion
CC242 Table topper, minimum diameter 12"
CC243 Table centrepiece

SPECIAL

CC244P Top point winner in Easter Section

Prize: \$10.00 Gift Certificate Donated by FABRICLAND Welland

CC245P Top point winner in Fabric, Quilts, Busy Needles Corner

Prize: \$25.00 Gift Certificate Donated by FABRICLAND Welland



Class CC – Creative Corner

Formerly Classes E&H and Class N



Chairperson: Sylvia Kenyon sylvia.wainfleetfair@gmail.com

WOODWORKING

Prizes: 1st \$5.00, 2nd \$4.00, 3rd \$3.00

- | | | | |
|-------|---|-------|--|
| CC246 | Item of wood incorporating a second material,
ex. resin, leather or steel, not a knife | CC253 | A wooden bowl |
| CC247 | An item using a scroll saw | CC254 | Handmade sign, not only paint on
wood needs to have some crafting |
| CC248 | Wooden bird feeder or house | CC255 | Wood turned item, not a bowl |
| CC249 | Handmade knife, complete with handle | CC256 | Hand carved item |
| CC250 | A furniture item small to medium size | CC257 | Item incorporating epoxy and/or
natural edge work |
| CC251 | A handmade cutting, serving or
charcuterie board | CC258 | Children's toy, maximum size 12"
square |
| CC252 | A wooden crate, box or chest | | |

SPECIAL

1st \$100 Stockroom Supply gift card, 2nd \$50 Stockroom Supply gift card, 3rd \$10 Stockroom Supply gift card

Donated by Stockroom Supply Tools

- CC259P 2X4 Competition. Wood must be sourced from a single 8' 2X4. Any type of glue, fastener & finish may be used. Judging based on creativity and workmanship.

KITS (NOT LEGO)

Prizes: 1st \$5.00, 2nd \$4.00, 3rd \$3.00

- | | | | |
|-------|---|-------|-----------------|
| CC260 | Model of an airplane or car. Must be completely
finished including paint or decals, maximum
dimension 12" in any plane, not Lego. | CC261 | Miniature room |
| | | CC262 | Paint by Number |

COMPUTER ARTS

Prizes: 1st \$5.00, 2nd \$4.00, 3rd \$3.00

- | | | | |
|-------|--|-------|--------------------------|
| CC263 | Item made with 3D printer, maximum 6" square | CC265 | Funny Photoshop, printed |
| CC264 | Art made from Procreate/Adobe, printed on
maximum size of 8.5x11" paper | CC265 | Wainfleet Meme, printed |



Class F - Flowers



Chairperson: Christine McCartney 289-478-1161 kcmccartney@gmail.com

General Rules

- Read and adhere to Rules and Regulations of the Fair
- All flowers and plants - FRESH FLOWERS unless otherwise stated
- Must be grown by the exhibitor
- All cut flowers require watertight containers
- All dried flowers must have weights to hold container in upright position
- All live cut flowers and weeds require proper oasis for water
- Under Cut Flower section all flowers are judged on 75% plant quality and 25% display
- Under Pixies and Flower Arrangements all flowers are judged on 60% arrangement quality and 40% floral quality
- One exhibit for each section (item number for example "F1PS") by each exhibitor

Some information for preparing exhibit

- Remove any evidence of disease, insects and dust from leaves and blooms
- Remove dead leaves
- Remove debris from soil
- Use clean container
- Cut stems on an angle
- A bloom is an individual flower one to a stem with no buds
- A spray is a portion of a plant with multiple blooms
- A stem has one or more blooms or buds
- The size of the container when specified will be that size in any direction
- Example an 8" round or 5" by 8" long rectangle

PRE-SCHOOL

Prizes: 1st \$3.00, 2nd \$2.00, 3rd \$1.00, 4th \$1.00

- F1PS 1 Rose stem in a jar
F2PS 1 Petunia stem in a jar
F3PS 1 Marigold stem in a jar

- F4PS 1 Small bouquet in a sand pail
F5PS 1 Geranium stem in a soup can
F6PS Arrangement with fair theme "We've Got A Good Thing Growing!"

KINDERGARTEN - GRADE 4

Prizes: 1st \$3.00, 2nd \$2.00, 3rd \$1.00, 4th \$1.00

- F7EL 1 Rosebud in a jar
F8EL 1 Large marigold
F9EL 2 Gladioli stems, any colour
F10EL 2 Stems of petunias
F11EL 2 Dahlias, any color, same size blooms
F12EL Arrangement of fresh or dried weeds in an unusual container not over 12"
F13EL A novelty arrangement using live flowers in a novelty container of your choice

- F14EL Your favourite houseplant 10" or smaller pot
F15EL An arrangement featuring a favourite farm toy or animal - no larger than 10" live or dried flowers
F16EL Baby Boo - Halloween arrangement using baby pumpkin and wild or garden flowers - no larger than 8" in any direction
F17EL Arrangement fair theme "We've Got A Good Thing Growing!" 10" or less

GRADE 5 - GRADE 8

Prizes: 1st \$3.00, 2nd \$2.00, 3rd \$1.00, 4th \$1.00

- F18EL Arrangement using fair theme "We've Got A Good Thing Growing!" 10" or less
F19EL 2 Stems of zinnias, any colour & variety
F20EL 2 Stems of cosmos, any colour
F21EL 2 Stems of snapdragons, any colour
F22EL 2 Stems of petunias, any variety
F23EL 2 Stems of marigolds, any variety
F24EL 2 Stems of salvia, same color
F25EL An arrangement of dried or fresh weeds in a suitable container with no toxic weeds
F26EL An arrangement of garden flowers in a sand pail
F27EL Your favourite houseplant - 10" and smaller, named

- F28EL A fairy garden - using natural materials with dried and live flowers, accessories allowed, 10"
F29EL Bedknobs and broomsticks - A Halloween display no larger than 8"
F30EL A Hobbit House - live or dried flowers and natural materials, accessories allowed, no larger than 8"
F31EL Arrangement featuring a favourite farm experience, live or dried flowers or grains, accessories allowed, no larger than 10"



Class F - Flowers



Chairperson: Christine McCartney 289-478-1161 kcmccartney@gmail.com

SECONDARY

Prizes: 1st \$4.00, 2nd \$3.00, 3rd \$2.00, 4th \$1.00

- | | | | |
|------|--|------|---|
| 1FSE | 2 Stems cosmos, any color | 4FSE | 1 Rose in a rose bowl, any variety |
| 2FSE | 2 Stems dahlias same variety, any colour | 5FSE | 2 Stems of snapdragons, any variety or colour |
| 3FSE | 2 stems of marigolds, any variety | 6FSE | 2 Stems zinnia, any variety or colour |

SPECIAL

Prize \$10.00 Donated by Will Radcliffe, Pro Dungeon Master/Game Master

- 7FSE Dungeons and Dragons - An arrangement using dried and or live flowers, accessories allowed, no larger than 10" pot

- | | | | |
|-------|--|-------|---|
| 8FSE | A Hobbit House - An arrangement from natural materials dried and/or live flowers | 11FSE | Favourite farm memory - Live, dried or grains, less than 10" accessories allowed |
| 9FSE | An arrangement using fair theme "We've Got a Good Thing Growing" 10" or less | 12FSE | Harry Potter - a magical arrangement using live or dried flowers, plus accessories. Not larger than 10" |
| 10FSE | An arrangement using a recycled container 6" or less and live flowers | | |

ADULTS

CUT FLOWERS

Prizes: 1st \$4.00, 2nd \$3.00, 3rd \$2.00, 4th \$1.00

- | | | | |
|-------|--|-------|--|
| A1FL | Amaranthus, 1 stem | A20FL | Helichrysum (strawflower), 3 stems, any colour |
| A2FL | Asters, any variety or colour, 3 stems | A21FL | Hydrangea, cone shape, 3 stems |
| A3FL | Carnations, 3 stems | A22FL | Hydrangea, round shape, 3 stems |
| A4FL | Celosia, any variety, 3 stems | A23FL | Marigolds 5 stems any colour, any variety |
| A5FL | Celosia Tall, Christata, 3 stems | A24FL | Ornamental Grasses - A collection of mixed varieties in an appropriate container |
| A6FL | Centaurea (bachelor button or cornflower) dwarf, 3 stems | A25FL | Pansies, any colour, 5 stems with foliage |
| A7FL | Centaurea Tall, 3 stems | A26FL | Petunias, any colour or variety, 3 stems |
| A8FL | Chrysanthemum bouquet of 5 stems | A27FL | Rudbeckia, any colour, 3 stems |
| A9FL | Cosmos, any colour, 3 stems | A28FL | Rose Floribunda, 3 sprays |
| A10FL | Dahlia 3 blooms under 3", any colour | A29FL | Rose Hybrid Tea, 1 bloom |
| A11FL | Dahlia 3 blooms, one colour 3" to 5" | A30FL | Rose Grandiflora, 1 bloom |
| A12FL | Dahlia 3 blooms, assorted colours, 3" to 5" | A31FL | Rose bloom, any variety, floating in a rose bowl |
| A13FL | Dahlia, 1 bloom, over 5" | A32FL | Salvia, any colour, 5 stems |
| A14FL | Dianthus, any colour, 3 stems | A33FL | Snapdragon, any variety and colour, 3 stems |
| A15FL | Geranium, cutting type, 3 stems and foliage | A34FL | Statice, 5 stems |
| A16FL | Geranium, seed type, 3 stems with foliage | A35FL | Sweet William, 3 sprays |
| A17FL | Geranium ivy, seed type, 3 stems with foliage | A36FL | Zinnia any variety, any colour, 3 stems |
| A18FL | Gladioli, 3 spikes, any colour | A37FL | Zinnia, best bloom, any variety |
| A19FL | Helianthus (sunflower), 1 bloom, any variety | | |



Class F - Flowers



Chairperson: Christine McCartney 289-478-1161 kcmccartney@gmail.com

POTTED HOUSE PLANTS

Prizes: 1st \$4.00, 2nd \$3.00, 3rd \$2.00, 4th \$1.00

B1FL	African Violet, best plant single or double bloom	B9FL	Spider plant 6" pot or larger
B2FL	Begonia, any variety, 6" pot	B10FL	Succulent, any variety, named
B3FL	Cacti, any variety, 6" to 10" pot	B11FL	Tropical foliage plant, named
B4FL	Cacti garden no larger than 10" container	B12FL	Tropical flowering plant
B5FL	Any fern pot larger than 6"	B13FL	Unusual house plant named, flowering or foliage
B6FL	Asparagus Fern, 6" or larger	B14FL	Tradescantia pot no larger than 18"
B7FL	Ivy any variety	B15FL	Your favourite house plant named
B8FL	Philodendron, any variety, named 4" pot and larger		

OUTSIDE GARDENING

Pots may be standard or hanging baskets

Prizes: 1st \$4.00, 2nd \$3.00, 3rd \$2.00, 4th \$1.00

C1FL	Begonia, any variety 6" or larger	C7FL	Petunia, any variety, pot or planter up to 12"
C2FL	Coleus single or assorted variety 6" or larger	C8FL	Planter, novelty container, flowering and foliage up to 18"
C3FL	Fuchsia, any variety 6" pot or larger	C9FL	Reclaimed novelty container, any combination of flowering or foliage varieties
C4FL	Geranium cutting type, any variety single plant		
C5FL	Geranium cutting type multiple plants		
C6FL	Impatiens any variety of any pot 6" and under		

PIXIES

All arrangements no larger than 4" in any direction

Prizes: 1st \$4.00, 2nd \$3.00, 3rd \$2.00, 4th \$1.00

D1FL	Pixie - Arrangement not to exceed 4", your choice container	D8FL	Cotton Candy - An arrangement with live flowers in pastel shades
D2FL	Good Morning - Arrangement in an egg cup	D9FL	It's Christmas - Live flowers inside a clear mini bowl
D3FL	Recycle - Using a recycled container and live or dried flowers	D10FL	Sporting Time - Live flowers & greenery depicting favourite sports & accessories
D4FL	A shot to go - Using a shot glass and live flowers	D11FL	Fun at the Fair - Depiction of the fair theme "We've Got A Good Thing Growing!" live flowers and greenery
D5FL	I have the blues - Shades of blue and greenery	D12FL	Tea time - Arrangement built inside of a teacup
D6FL	Black and white with bursts of greenery		
D7FL	Indian summer - Live flowers in shades of one colour		

FLOWER ARRANGEMENTS

Prizes: 1st \$4.00, 2nd \$3.00, 3rd \$2.00, 4th \$1.00

E1FL	Country Time - Arrangement of garden flowers in a container of choice no larger than 18"	E4FL	Teatime an arrangement in a teapot of live flowers and greenery
E2FL	Wayward Wind - An arrangement of dried weeds not to exceed 18" in height weeds 50/50 arrangement	E5FL	Wild Beauty wild field flowers not exceeding 18" in height
E3FL	Ice Storm of 2022 - All white and arranged with greens	E6FL	Play misty for me - Mauve and blue with greenery
		E7FL	Merry Christmas - Suitable for dining room table Christmas novelty container



Class F - Flowers



Chairperson: Christine McCartney 289-478-1161 kcmccartney@gmail.com

- | | | | |
|-------|--|-------|--|
| E8FL | Baby on the way - Live flowers with greenery and accessories | E17FL | Hobby Time - Live flowers and greenery and choice of accessory for hobby |
| E9FL | A toast to summer - An arrangement using brandy snifter, live flowers | E18FL | Java arrangement - In a clear coffee mug with real flowers and foliage |
| E10FL | Fun in a pumpkin - Live flowers and greenery, provide dish so it doesn't leak | E19FL | Time to play - An arrangement with live flowers and greenery in a sand toy (truck, pail, shovel) |
| E11FL | Light the way - Use a lighting accessory any live or dried flowers accent greenery | E20FL | Bird in the garden - Live flowers and accent greenery with bird accessory |
| E12FL | Unusually original - Live flowers in an unusual container | E21FL | Midnight Madness - An all-black arrangement with green foliage, no larger than 10" |
| E13FL | Cup and Saucer - Foliage and Flowers | E22FL | Fairy Garden - Live and dried flowers with green accents with accessories |
| E14FL | Toasting Christmas - Using a Christmas mug can use accessories | | |
| E15FL | An Arrangement using the colours of Halloween, no larger than 10" | | |
| E16FL | Bakers Kitchen - Live flowers using bakers' tool for accessory | | |

SPECIAL

Prize \$10.00 Donated by Will Radcliffe, Pro Dungeon Master/Game Master

- E24FL A Hobbit House - Natural materials and live or dried flowers

- | | | | |
|-------|---|-------|---|
| E25FL | Lunch Social - an arrangement in a picnic basket 10" or smaller accessories allowed | E27FL | Harry Potter - a magical arrangement using live or dried flowers, plus accessories. Not Larger than 10" |
| E26FL | The Bees Knees - arrangement with bee theme colours, accessories | | |

SPECIAL

Prize \$10.00 Donated by Will Radcliffe, Pro Dungeon Master/Game Master

- E28FL Dungeon and Dragons an arrangement of dried and live flowers – pot no larger than 10"

- E29FL An arrangement using fair theme "We've Got A Good Thing Growing!" 10" or smaller

SPECIAL

Prize \$25.00 Donated by Bowen Road Branch Federated Women's Institute of Ontario.

- E30FL Best in Show from all exhibits



Class G – Grain & Hay



Chairperson: Glenn Oosterhof Jr. g.oosterhof98@gmail.com

General Rules

- All grain must be 2025 crop except for 13GR – soybeans should be from 2024 crop
- Hay entries must be a 10" slice of a bale, properly tied using 2 strings.

Many thanks to the Grain Farmers of Ontario for funding prize money in both sections

SECONDARY SCHOOL

Prizes 1st \$4.00, 2nd \$3.00, 3rd \$2.00, 4th \$1.00

1GRS	1-Quart container of oats	5GRS	4 Ears of field corn
2GRS	1-Quart container of wheat	6GRS	3 Ears of Indian corn
3GRS	1-Quart container of soybeans	7GRS	3 Ears of popcorn
4GRS	1-Quart container of shelled corn	8GRS	Tallest stalk of corn, no roots
		9GRS	3 Stalks of corn tied together

ADULT

Prizes 1st \$5.00, 2nd \$3.00, 3rd \$2.00

10GR	Winter wheat - 1/2-bushel	12GR	4 Quarts of shelled corn
11GR	Oats - 1/2 bushel	13GR	4 Quarts shelled soybeans 2024 crop legume

SPECIAL

Prize: Gift certificate for bag of soybeans donated by Josh Kelly, Clark Agri Service

14GR	Sheaf of soybeans, at least 3" in diameter - trim roots		
15GR	Sheaf of corn – 6 stalks silage	19GR	1st cut hay 85% or more legume
16GR	2 Sunflower heads	20GR	2nd cut hay 85% or more legume
17GR	1st cut hay 75% or more grass	21GR	Corn silage - 1/2 bushel in plastic bag
18GR	2nd cut hay 75% or more grass		

SPECIAL

22GR Haylage - 1/2 bushel in plastic bags

1st prize: Voucher for Bag of Alfalfa Seed
Donated by Jimmy Yungblut, DLF Pickseed Canada

2nd prize: \$3.00
3rd prize: \$2.00

23GR 10 ears corn - up to 3000 heat units, variety named

1st prize: Voucher for Bag of Corn Seed
Donated by Jimmy Yungblut, DLF Pickseed Canada

3rd prize: \$25 Minor Brothers Gift Card

2nd prize: A bag of lawn fertilizer
Donated by Hessels Farm Supply Dunnville

24GR 10 ears corn - over 3000 heat units, variety named

1st prize: Voucher for Bag of Corn Seed
Donated by Jake Elgersma, Gralex Seeds

3rd prize: \$25 Minor Brothers Gift Card

2nd prize: A bag of lawn fertilizer
Donated by Clark's Agri Service Wellandport

SUNFLOWER GROWING CONTEST

PRE SCHOOL AND ELEMENTARY EXHIBITORS

Prizes: 1st \$5.00, 2nd \$4.00, 3rd \$3.00, 4th \$2.00, 5th \$1.00

25GR	Largest sunflower head with 1' stalk	27GR	Tallest stalk complete with head, at ground level no soil
26GR	Best formed sunflower head with 1' stalk		

SECONDARY AND ADULT EXHIBITORS

Prizes: 1st \$5.00, 2nd \$4.00, 3rd \$3.00, 4th \$2.00, 5th \$1.00

28GR	Largest sunflower head with 1' stalk	29GR	Best formed sunflower head with 1' stalk
------	--------------------------------------	------	--



Class O - Vegetables



Chairperson: Bambi Reker 905-899-3626

General Rules

- The general Rules and Regulations apply to this class
- Leave 1-inch tops on carrots, beets and parsnips
- Vegetables must be grown by Exhibitor
- Boxes will be provided on Saturday night if you wish to donate your fruit and vegetables to the Soup Kitchen

PRE-SCHOOL

Prizes: 1st \$3.00, 2nd \$2.00, 3rd \$1.00

1VE	5 Cherry tomatoes on a plate	7VE	1 Butternut squash
2VE	1 Red slicing tomato on a plate	8VE	6 Yellow or green beans on a plate
3VE	1 Roma type tomato on a plate	9VE	1 White potato on a plate
4VE	1 Sweet green pepper on a plate	10VE	1 Red potato on a plate
5VE	1 Sweet red pepper on a plate	11VE	1 Beet on a plate
6VE	1 Pepper squash	12VE	1 Carrot on a plate

KINDERGARTEN TO GRADE 4

Prizes: 1st \$3.00, 2nd \$2.00, 3rd \$1.00

13VE	5 Cherry tomatoes on a plate	20VE	6 Yellow or green beans on a plate
14VE	2 Red slicing tomato on a plate	21VE	2 Beets on a plate
15VE	2 Roma type tomato on a plate	22VE	1 Zucchini suitable for eating
16VE	2 Sweet green pepper on a plate	23VE	2 Carrots on a plate
17VE	2 Sweet red pepper on a plate	24VE	2 White potatoes on a plate
18VE	1 Pepper squash	25VE	2 Red potatoes on a plate
19VE	1 Butternut squash	26VE	Any vegetable not listed above

SPECIALS - PRESCHOOL TO GRADE 4

Prizes: 1st \$10.00, 2nd \$8.00, 3rd \$6.00

27VE	A decorative display of 10 gourds in a basket
------	---

GRADE 5 TO GRADE 8

Prizes: 1st \$3.00, 2nd \$2.00, 3rd \$1.00

28VE	5 Cherry tomatoes on a plate	36VE	2 Beets on a plate
29VE	2 Red slicing tomato on a plate	37VE	1 Zucchini suitable for eating
30VE	2 Roma type tomato on a plate	38VE	3 Green onions on a plate
31VE	2 Sweet green pepper on a plate	39VE	1 Jack-O-Lantern pumpkin
32VE	2 Sweet red pepper on a plate	40VE	3 Carrots on a plate
33VE	2 Pepper squash	41VE	3 White potatoes on a plate
34VE	2 Butternut squash	42VE	3 Red potatoes on a plate
35VE	6 Yellow or green beans on a plate	43VE	3 Beets on a plate
		44VE	Any vegetable not listed above

SPECIALS - GRADE 5 TO GRADE 8

45VE	A display of garden vegetables in a container of your choosing (e.g. a basket)
------	--

Prizes: 1st \$5.00, 2nd \$4.00, 3rd \$3.00

46VE	A decorative display of 10 gourds in a basket
------	---

Prizes: 1st \$10.00, 2nd \$8.00, 3rd \$6.00



Class 0 - Vegetables

Chairperson: Bambi Reker 905-899-3626



SECONDARY SCHOOL

Prizes: 1st \$3.00, 2nd \$2.00, 3rd \$1.00

- 47VE 10 Cherry tomatoes on a plate
- 48VE 5 Red slicing tomato on a plate
- 49VE 5 Roma type tomato on a plate
- 50VE 3 Sweet green pepper on a plate
- 51VE 3 Sweet red pepper on a plate
- 52VE 2 Pepper squash
- 53VE 2 Butternut squash
- 54VE 10 Yellow or green beans on a plate

- 55VE 3 Beets on a plate
- 56VE 2 Zucchini suitable for eating
- 57VE 4 White potatoes on a plate
- 58VE 4 Red potatoes on a plate
- 59VE 4 Beets on a plate
- 60VE 4 Carrots on a plate
- 61VE Any vegetable not listed above

SPECIALS - SECONDARY

- 62VE A display of garden vegetables in a container of your choosing (e.g. a basket)

Prizes: \$5.00

- 63VE A decorative display of 10 gourds in a basket

Prizes: 1st \$10.00, 2nd \$8.00, 3rd \$6.00

GIANT PUMPKIN CONTEST - OPEN TO PRE-SCHOOL TO GRADE 12

- 64VE Giant Pumpkin Contest by weight, any variety

Prizes: 1st \$100.00, 2nd \$50.00, 3rd \$25.00 All other worthy entries \$10.00 each - Sponsored by Dan Bath

VEGETABLE SPECIAL - CONTEST OPEN TO PRE-SCHOOL TO GRADE 12

- 65VE Largest red or green pepper by weight

First Prize \$10.00

- 66VE Longest zucchini squash

First Prize \$10.00

- 67VE Largest red beet by weight

First Prize \$10.00

- 68VE Largest potato by weight

First Prize \$10.00

ADULT

Prizes: 1st \$4.00, 2nd \$3.00, 3rd \$2.00

- 69VE Muskmelons - 2
- 70VE Watermelons - 2
- 71VE Beans - 1 litre, Green, or Yellow
- 72VE Beans - 1 litre, Lima
- 73VE Broccoli - 3 heads tied together
- 74VE Brussels sprouts - 1 stalk
- 75VE Cabbage - 2 heads green
- 76VE Cabbage - 2 heads red
- 77VE Cabbage - 2 heads Savoy
- 78VE Cauliflower - 2 heads
- 79VE Corn - 5 ears Indian
- 80VE Corn - 5 ears popping
- 81VE Corn - 5 ears sweet

- 82VE Cucumbers - 2 long seedless type
- 83VE Cucumbers - 2 slicing
- 84VE Leeks - 3 on a plate
- 85VE Garlic - 5 bulbs on a plate
- 86VE Onions - green, 6 on a plate
- 87VE Onions - cooking, 5 on a plate
- 88VE Onions - 3 litre basket, cooking
- 89VE Onions - 3 litre basket, Spanish
- 90VE Onions - 3 Spanish on a plate
- 91VE Peppers - 5 hot bananas on a plate
- 92VE Peppers - 5 hot red on a plate
- 93VE Peppers - 5 Hungarian stuffing on a plate



Class O - Vegetables

Chairperson: Bambi Reker 905-899-3626



- 94VE Peppers - 5 red pimentos on a plate
- 95VE Peppers - 5 sweet green on a plate
- 96VE Peppers - 5 sweet red on a plate
- 97VE Squash - 2 buttercups
- 98VE Squash - 2 butternuts
- 99VE Squash - 2 peppers
- 100VE Squash - 2 blue hubbard
- 101VE Squash - 2 golden hubbard
- 102VE Squash - 2 green hubbard
- 103VE Squash - largest blue hubbard
- 104VE Squash - largest green or golden hubbard
- 105VE Squash - 2 spaghetti squash
- 106VE Tomatoes - 10 cherry on a plate, stems on, or other tiny tim varieties

POTATOES - 3 LITRE BASKET

Prizes: 1st \$4.00, 2nd \$3.00, 3rd \$2.00

- 119VE Sheppody
- 120VE Katadin
- 121VE Sebago

POTATOES - 5 ON A PLATE

Prizes: 1st \$4.00, 2nd \$3.00, 3rd \$2.00

- 126VE Sheppody
- 127VE Katadin
- 128VE Sebago

OTHER ROOTS

Prizes: 1st \$4.00, 2nd \$3.00, 3rd \$2.00

- 133VE Beets - 5 on a plate
- 134VE Carrots - 5 long on a plate

- 107VE Tomatoes - 5 red - on a plate
- 108VE Tomatoes - 3 litre basket red - stems removed
- 109VE Tomatoes - 5 Roma type - on a plate
- 110VE Tomatoes - 5 yellow on a plate
- 111VE 5 Heritage Type Tomatoes on a plate
- 112VE Vegetable marrow - 2
- 113VE Zucchini - 3 under 8"
- 114VE 1 Jack-O-Lantern pumpkin
- 115VE Pie pumpkins - 2
- 116VE Eggplants - 2
- 117VE Honeydew melons - 2
- 118VE Any vegetable not listed above

- 122VE Kennebec
- 123VE Red - any variety, named
- 124VE White - any variety, named
- 125VE Yukon Gold

- 129VE Kennebec
- 130VE Red - any variety, named
- 131VE White - any variety, named
- 132VE Yukon Gold

- 135VE Carrots - 5 short on a plate
- 136VE Parsnips - 3 on a plate
- 137VE 2 Table - type turnip

SPECIALS

- 138VE A decorative display of 10 gourds

Prizes 1st, \$10.00, 2nd, \$8.00, 3rd \$6.00

- 139VE Largest pumpkin over 50 lbs in any variety

Prizes: 1st \$100.00, 2nd \$50.00, 3rd \$25.00

- 140VE Vegetable Display - Approx. 3 feet wide by 2 feet deep, gourds can be included

Prizes: 1st \$15.00, 2nd \$10.00, 3rd \$8.00

- 141VE Largest cabbage by weight

Prize \$10.00

- 142VE Largest red beet by weight

Prize \$10.00 Donated by Mary Hilbing

- 143VE Largest red pepper by weight

Prize \$10.00

- 144VE Largest Spanish onion by weight

Prize \$10.00 Donated by Cecil Reker

- 145VE Largest watermelon by weight

Prize \$10.00

- 146VE Longest carrot over 8"

Prize \$10.00 Donated by Bambi Reker

- 147VE Longest zucchini over 15"

Prize \$10.00 Donated by Norma Bird, Past President

- 148VE Largest potato by weight

Prize \$10.00 Donated by Kelly Martindale, Fair President

- 149VE Largest eggplant by weight

Prize \$10.00

- 150VE Largest blue hubbard squash by weight

Prize \$10.00 Donated by Mayor Brian Grant



Class P - Fruits



Chairperson: Bambi Reker 905-899-3626

General Rules

- Read and adhere to Rules and Regulations of the Fair
- Fruits must be grown by Exhibitor
- Boxes will be provided on Saturday night if you wish to donate your fruit and vegetables to the Soup Kitchen

PRE-SCHOOL

Prizes: 1st \$3.00, 2nd \$2.00 & 3rd \$1.00

1FR 1 Apple on a plate
2FR 1 Pear on a plate

3FR Stem of grapes on a plate
4FR 1 Muskmelon

KINDERGARTEN TO GRADE 4

Prizes: 1st \$3.00, 2nd \$2.00 & 3rd \$1.00

5FR 2 Apples on a plate
6FR 2 Pears on a plate

7FR 2 Stems of grapes on a plate
8FR 1 Muskmelon
9FR 1 Watermelon

GRADE 5 TO GRADE 8

Prizes: 1st \$3.00, 2nd \$2.00 & 3rd \$1.00

10FR 2 Apples on a plate
11FR 2 Pears on a plate

12FR 2 Stems of grapes on a plate
13FR 1 Muskmelon
14FR 1 Watermelon

SECONDARY SCHOOL

Prizes: 1st \$3.00, 2nd \$2.00 & 3rd \$1.00

15FR 3 Litre basket of apples
16FR 3 Litre basket of pears

17FR 2 Stems of grapes on a plate
18FR 2 Muskmelon
19FR 1 Watermelon

ADULT

APPLES - 3 LITRE BASKET

Prizes: 1st \$4.00, 2nd \$3.00, 3rd \$2.00

20FR Spy
21FR McIntosh
22FR Courtland

23FR Red Delicious
24FR Golden Delicious
25FR Ida Red
26FR Any other variety, named

APPLES - 5 ON A PLATE

Prizes: 1st \$4.00, 2nd \$3.00, 3rd \$2.00

27FR Spy
28FR McIntosh
29FR Courtland

30FR Red Delicious
31FR Golden Delicious
32FR Ida Red
33FR Any other variety, named

OTHER FRUITS

Prizes: 1st \$4.00, 2nd \$3.00, 3rd \$2.00

34FR 1 Litre basket of grapes
35FR 3 Litre basket Bosc Pears

36FR 3 Litre basket Bartlett Pears
37FR 3 Litre basket any other variety of pears, named



Class R - Eggs, Honey & Maple Syrup



Chairperson: Bambi Reker 905-899-3626

General Rules

- Read and adhere to Rules and Regulations of the Fair
- Eggs must be from hens owned by the Exhibitor
- All honey must be from bees owned by Exhibitor
- Maple syrup must be made solely by the exhibitor

PRE-SCHOOL

Prizes: 1st \$3.00, 2nd \$2.00, 3rd \$1.00

1EH	1 Dozen brown eggs	4EH	1 Small jar of white honey
2EH	1 Dozen white eggs	5EH	1 Small jar of golden honey
3EH	1 Dozen multi-coloured eggs, any size	6EH	1 Small jar of buckwheat honey

KINDERGARTEN TO GRADE 4

Prizes: 1st \$3.00, 2nd \$2.00, 3rd \$1.00

7EH	1 Dozen brown eggs	10EH	1 Small jar of white honey
8EH	1 Dozen white eggs	11EH	1 Small jar of golden honey
9EH	1 Dozen multi-coloured eggs, any size	12EH	1 Small jar of buckwheat honey

GRADE 5 TO GRADE 8

Prizes: 1st \$3.00, 2nd \$2.00, 3rd \$1.00

13EH	1 Dozen brown eggs	16EH	1 Small jar of white honey
14EH	1 Dozen white eggs	17EH	1 Small jar of golden honey
15EH	1 Dozen multi-coloured eggs, any size	18EH	1 Small jar of buckwheat honey

SECONDARY SCHOOL

Prizes: 1st \$3.00, 2nd \$2.00, 3rd \$1.00

19EH	1 Dozen brown eggs	22EH	1 Small jar of white honey
20EH	1 Dozen white eggs	23EH	1 Small jar of golden honey
21EH	1 Dozen multi-coloured eggs, any size	24EH	1 Small jar of buckwheat honey

ADULTS

Prizes: 1st \$4.00, 2nd \$3.00, 3rd \$2.00

25EH	1 Dozen brown Grade A large eggs	29EH	1 Small jar of golden honey
26EH	1 Dozen white Grade A large eggs	30EH	1 Small jar of buckwheat honey
27EH	1 Dozen multi-coloured eggs, any size	31EH	1 Small jar of maple syrup
28EH	1 Small jar of white honey	Winners may advance to District 6 see rules on next page	
Winners may advance to District 6 see rules on next page			



LIQUID HONEY DISTRICT COMPETITION

Prizes: 1st \$50.00, 2nd \$30.00, 3rd \$20.00 Sponsored by the Ontario Beekeepers Association

28EH Pure, Ontario # 1, White Liquid Honey

General Competition Rules document Exhibitors of honey must be registered beekeepers and the exhibits shown by them must be pure honey from floral sources in their apiaries. Entry must be made solely by the person or family entering the competition.

Rules for District Competition:

- Each agricultural society is entitled to send their best of show to the district competition.
- If the exhibitor has won at more than one fair, the one closest to the exhibitor's home address is the agricultural society from which the entry will be sent to the district competition. The other agricultural societies may send their second - place winner into the district competition. An exhibitor may only enter into one district competition.
- The OAAS will award a ribbon to exhibitors of winning entries at each district competition.

Rules for Provincial Competition:

- Liquid Honey exhibits shall consist of two clear glass containers, each having a capacity of 500 grams (375 ml)
- Entries must be labeled on the BOTTOM of the containers only with a supplied entry number or identifier. No other labels will be permitted
- Any honey entry containing any form of foreign material will be disqualified from the competition
- An approved colorimeter will be used to assess the colour
- Honey will be judged using the standards printed in the OAAS Agriculture & Horticulture Judging Standards for Ontario Fairs
- It is a condition of entry that all honey products entered become property of the OAAS. 1st and 2nd place entries will be placed up for auction at the convention

Rules for 2025 Fairs & 2026 Convention

Appearance 45 points:

- 15 Density (moisture content)
- 10 Brightness
- 10 Flavour and aroma
- 5 Uniformity of honey
- 5 Colour

Clarity 45 points:

- 15 Free from crystals
- 15 Free from pollen, wax, etc
- 15 Free from air bubbles either in suspension or as froth

Containers 10 points:

- 5 Pleasant appearance, of equal size and shape
- 5 Uniform level of fill

MAPLE SYRUP DISTRICT COMPETITION

Provincial Prizes: 1st \$50.00, 2nd \$30.00, 3rd \$20.00

31EH Pure Maple Syrup, Ontario Grade A - Amber.

General Competition Rules document Exhibitors of honey must be registered beekeepers and the exhibits shown by them must be pure honey from floral sources in their apiaries. Entry must be made solely by the person or family entering the competition.

Rules for District Competition:

- Each agricultural society is entitled to send their best of show to the district competition.
- If the exhibitor has won at more than one fair, the one closest to the exhibitor's home address is the agricultural society from which the entry will be sent to the district competition. The other agricultural societies may send their second - place winner into the district competition. An exhibitor may only enter into one district competition.
- The OAAS will award a ribbon to exhibitors of winning entries at each district competition.

Rules for Provincial Competition:

- Maple Syrup exhibits shall consist of two (2) curved Kent style glass bottles (D&G #505188 Syrup Bottle with Handle), or equivalent, of Maple Syrup, Canada Grade A - Amber, each having a capacity of 250ml
- Entries must be labeled on the BOTTOM of the containers only with a supplied entry number or identifier. No other labels will be permitted
- All maple syrup should have a flavour characteristic of its respective colour class and be free from any objectionable odour or taste. It is best to sample from the same lot before submitting your entries to the OAAS.
- Any maple syrup entry containing any form of foreign material will be disqualified from the competition
- Maple syrup will be judged using the standards published by the OAAS in Agriculture & Horticulture Judging Standards for Ontario Fairs.
- It is a condition of entry that all maple syrup products entered become property of the OAAS. 1st and 2nd place entries will be placed up for auction at the convention.

Judging Standards:

- 30 Points for density
- 40 Points for flavour
- 20 Points for colour
- 10 Points for clarity



Class X - Poultry, Pigeon & Rabbit



Chairperson: Keirstyn Gendron, 289-969-4015 gendronmk@gmail.com

General Rules

- Read and adhere to Rules and Regulations of the Fair
- Entries must be brought to the cattle shed on Wednesday between 2 p.m. and 9 p.m. and remain until Saturday at 5:00 p.m. No exceptions.
- Judging will be held on Thursday, September 18, 2025
- Space is limited! The Chairperson reserves the right to refuse entries once the capacity of the building has been reached - cages will be supplied for all poultry and rabbits.
- All exhibits shall be subject to health inspection at the time of arrival by the Chairperson and sick or debilitated exhibits shall be removed - **any animal(s) showing signs of sickness will be removed from the show immediately. This will be strictly enforced.**
- Exhibitors may show as many entries in any class as they wish.
- Any section where five or more birds are entered for competition, the Chairperson has the right to make an additional class.
- The Society will not be responsible for any loss or damage regardless of cause; all exhibits being entered are at the sole risk of the owners.
- This show will be cancelled if there are instructions from the CFIA and/or Feather Board Command Centre regarding Avian Influenza in the area.
- This show may be cancelled if there are any poultry related illness in the Niagara Region that will pose a risk to the animals attending.
- **All efforts will be made to make sure the animals are safe and secure at the show. Animals will be supervised at all times and will be cared for and fed by the Chairperson and committee. Fresh water and food will be provided throughout the duration of the show.**

STANDARD CHICKENS

Prizes: 1st \$5.00, 2nd \$4.00, 3rd \$3.00

1X	Plymouth Rock, any variety - Male	23X	Leghorn, any variety - Female
2X	Plymouth Rock, any variety - Female	24X	Leghorn, any variety - Male
3X	Columbian Rock, any variety - Female	25X	Cornish, any variety - Female
4X	Columbian Rock, any variety - Male	26X	Cornish any variety - Male
5X	Chantecler - Female	27X	Modern Game, any variety - Female
6X	Chantecler - Male	28X	Modern Game, any variety - Male
7X	New Hampshire - Female	29X	Polish, any variety - Female
8X	New Hampshire - Male	30X	Polish, any variety - Male
9X	Ameraucana - Female	31X	Old English Game, any variety - Female
10X	Ameraucana - Male	32X	Old English Game, any variety - Male
11X	Andalusian - Female	33X	Australorp, any variety - Female
12X	Andalusian - Male	34X	Australorp, any variety - Male
13X	Araucana - Female (<i>hint* has no tail</i>)	35X	Orpington, any variety - Female
14X	Araucana - Male (<i>hint* has no tail</i>)	36X	Orpington, any variety - Male
15X	Maran - Female	37X	Cochin, any variety - Female
16X	Maran - Male	38X	Cochin, any variety - Male
17X	Brahm, any variety - Female	39X	Hamburgs, any variety - Female
18X	Brahm, any variety - Male	40X	Hamburgs, any variety - Male
19X	Rhode Island Red - Female	41X	Red or Black Sex Link - Female
20X	Rhode Island Red - Male	42X	Red or Black Sex Link - Male
21X	Wyandotte, any variety - Female	43X	Any other variety, named - Female
22X	Wyandotte, any variety - Male	44X	Any other variety, named - Male



Class X - Poultry, Pigeon & Rabbit



Chairperson: Keirstyn Gendron, 289-969-4015 gendronmk@gmail.com

BANTAM CHICKENS

Prizes: 1st \$5.00, 2nd \$4.00, 3rd \$3.00

45X	Seabright, any variety - Female	65X	Old English Game, any variety - Female
46X	Seabright, any variety - Male	66X	Old English Game, any variety - Male
47X	Brahm, any variety - Female	67X	Leghorn, any variety - Female
48X	Brahm, any variety - Male	68X	Leghorn, any variety - Male
49X	Rhode Island Red, any variety - Female	69X	Modern Game, any variety - Female
50X	Rhode Island Red, any variety - Male	70X	Modern Game, any variety - Male
51X	Japanese, any variety - Female	71X	Wyandotte, any variety - Female
52X	Japanese, any variety - Male	72X	Wyandotte, any variety - Male
53X	Hamburg, any variety - Female	73X	Plymouth Rock, any variety - Female
54X	Hamburg, any variety - Male	74X	Plymouth Rock, any variety - Male
55X	Polish, any variety - Female	75X	Booted Bantam, any variety - Female (<i>hint* has a beard</i>)
56X	Polish, any variety - Male	76X	Booted Bantam, any variety - Male (<i>hint* has a beard</i>)
57X	Cochin, any variety - Female	77X	Belgian D'Uccles, any variety - Female (<i>hint* NO beard</i>)
58X	Cochin, any variety - Male	78X	Belgian D'Uccles, any variety - Male (<i>hint* NO beard</i>)
59X	Rosecomb, any variety - Female	79X	Silkies, any variety - Female
60X	Rosecomb, any variety - Male	80X	Silkies, any variety - Male
61X	Cornish, any variety - Female	81X	Belgium, any variety - Female
62X	Cornish, any variety - Male	82X	Belgium, any variety - Male
63X	Orpington, any variety - Female	83X	Any other variety, named - Female
64X	Orpington, any variety - Male	84X	Any other variety, named - Male

GUINEA FOWL

Prizes: 1st \$5.00, 2nd \$4.00, 3rd \$3.00

85X	Any variety – Female	86X	Any variety – Male
-----	----------------------	-----	--------------------

CHUKAR PARTRIDGE

Prizes: 1st \$5.00, 2nd \$4.00, 3rd \$3.00

87X	Any variety – Female	88X	Any variety – Male
-----	----------------------	-----	--------------------

DOVES

Prizes: 1st \$5.00, 2nd \$4.00, 3rd \$3.00

89X	Dove, any variety - Female	90X	Dove, any variety - Male
-----	----------------------------	-----	--------------------------

PIGEONS

Prizes: 1st \$5.00, 2nd \$4.00, 3rd \$3.00

91X	Clean Leg, any variety - Female	93X	Clean Leg, any variety - Male
92X	Feather Leg, any variety - Female	94X	Feather Leg, any variety – Male

DUCKS

Prizes: 1st \$5.00, 2nd \$4.00, 3rd \$3.00

95X	Call White - Female	100X	East Indies - Male
96X	Call White - Male	101X	Runner, any variety - Female
97X	Call, any other colour - Female	102X	Runner, any variety - Male
98X	Call, any other colour - Male	103X	Lightweight Breed, any other variety - Female
99X	East Indies - Female		



Class X - Poultry, Pigeon & Rabbit Show



Chairperson: Keirstyn Gendron, 289-969-4015 gendronmk@gmail.com

- 104X Lightweight Breed, any other
variety - Male
105X Cayuga - Female
106X Cayuga - Male
107X Mediumweight Breed, any other
variety - Female
108X Mediumweight Breed, any other
variety - Male

- 109X Pekin - Female
110X Pekin - Male
111X Rouen - Female
112X Rouen - Male
113X Muscovy, any variety - Female
114X Muscovy, any variety - Male
115X Heavyweight Breed, any other variety - Female
116X Heavyweight Breed, any other variety - Male

GEESE

Prizes: 1st \$5.00, 2nd \$4.00, 3rd \$3.00

- 117X Lightweight, any variety - Female
118X Lightweight, any variety - Male
119X Mediumweight, any variety - Female
120X Mediumweight, any variety - Male
121X Heavyweight, any variety - Female
122X Heavyweight, any variety - Male

TURKEY

Prizes: 1st \$5.00, 2nd \$4.00, 3rd \$3.00

- 123X Any variety - Female
124X Any variety - Male

RABBITS

Prizes: 1st \$5.00, 2nd \$4.00, 3rd \$3.00

- 125X Netherland Dwarf - Female
126X Netherland Dwarf - Male
127X Lionhead, any variety - Female
128X Lionhead, any variety - Male
129X Hotot, any variety - Female
130X Hotot, any variety - Male
131X Dutch - Female
132X Dutch - Male
133X Rex - Female
134X Rex - Male
135X Lop, any variety - Female
136X Lop, any variety - Male
137X Angora, any variety - Female
138X Angora, any variety - Male
139X Flemish Giant, any variety - Female
140X Flemish Giant, any variety - Male
141X Californian - Female
142X Californian - Male
143X New Zealand, any variety - Female
144X New Zealand, any variety - Male
145X Any other variety - Female
146X Any other variety - Male

SPECIAL GRAND PRIZE ROSSETTES

Winner of Best Exhibit ribbons and rosettes will be given to the following categories

Best Bantam Chicken of Show
Best Standard Chicken of Show
Best Standard Guinea Fowl

Best Pigeon of Show
Best Dove of Show
Best Duck of Show

Best Goose of Show
Best Standard Chukar Partridge
Best Rabbit of Show

Special Rosette for the Judges selection of the best overall entry.

Shows & Events

General Rules

- Each event has it's own location, time and rules and regulations.
- Please see each page for more information.
- Exhibitor Numbers are not required to enter in the Pet Show, Baby Show, Pedal Car Pull and the 4H Events do not require an Exhibitor Number to enter
- Payouts occur after judging at the show
- More events may be posted on our website wainfleetfair.com



Kid's Pedal Tractor Pull



Event Information: Saturday, September 20, 2025, 11AM, Drive Shed
Chairperson: Alissa Pols 905-931-2928 alissa.wainfleetfallfair@gmail.com

Special thanks to our sponsors: Oosterhof Farms, Lakeside Detailing, Perry Road Preowned

General Rules

- All contestants must be able to pedal without assistance.
- All contestants must wear shoes, not sandals.
- All contestants will be given 2 attempts to get going from the starting line.
- The pulling tractor must remain on the designated track at all times. If the tractor leaves the designated area, the distance will be measured from the point it left the track.
- In the case of a tie, there will be a pull-off to determine the winner and runner up.
- The judge's decision is final for all pulls.
- All children must be accompanied by a parent or guardian.
- Each contestant must have a permission slip signed prior to pulling signed by their parent or guardian releasing the Wainfleet Agricultural Society of any responsibility due to accident at this event.
- Most importantly, have fun!!

Registration

- In advance via email to alissa.wainfleetfallfair@gmail.com, stating name and age at time of event.
- In person registration starting at 10:30AM day of event.

Prizes

- Trophy to winner of each class; treat for all competitors

Classes

- 4 classes: 4, 5, 6, & 7 year olds
- Classes will run from youngest to oldest



Pet Show



Event Information: Saturday, September 20, 2025, 9AM, Drive Shed

Chairperson: Linda Fletcher 905-899-1488

Our Pet Show is sponsored in part by Minor Bros Feed and Port Colborne Animal Hospital

General Rules

- The Pet Show is open to all school age children
- No pre-registration is required.
- Note: pets (except stuffed animals) cannot be taken into the Arena or be allowed on the Fair grounds unless they are involved with another event or Class.
- The Pet Show will be judged without pause in the same order as listed. Be sure you are there when your section is called. The Judge's decision will be final.
- The Exhibitor or their immediate family must own all pets including stuffed animals.
- Animals that appear to be suffering from disease or injury will be turned away and will not be allowed to compete.
- Exhibitors must bring their own coops or cages when necessary.
- All animals must be securely housed or leashed or kept under control by the exhibitor, and not allowed in the arena.
- All adult cats must be in cages.
- Fair authorities will not be responsible for run-away pets or injury to animals, exhibitors or bystanders.
- For any wild animals (e.g. skunks, raccoons, squirrels, etc.) exhibited, the owner must have a permit from the Ministry of Natural Resources.
- Animals will be judged as pets only; a pedigree is of no importance.
- The registered exhibitor must be with his or her pet at the time of judging, no sister, brother, or friend may substitute.

Prizes: 1st \$4.00, 2nd \$3.00, 3rd \$2.00, 4th-\$1.00

1PE Cutest kitten, 5 weeks to 6 months
2PE Pet most resembling owner

3PE Nicest solid coloured cat
4PE Dog showing least resemblance to
any breed

SPECIAL

Prize: 1st \$5.00, 2nd \$4.00, 3rd \$3.00

5PE Best dressed dog

6PE Best pair of matched rabbits
7PE Most attractive rabbit
8PE Cutest puppy, 2 to 9 months
9PE Nicest looking frog
10PE Any other unusual pet (must be a household
pet, not including pets listed in other sections.)
11PE Pet able to do the best trick

12PE Cat with most unusual colour or
markings
13PE Cat with the prettiest tail
14PE Frog jumping contest, total of two
jumps
15PE Furriest pet
16PE Most loved stuffy
17PE Best dressed stuffy

SPECIAL

Prize: 1st \$5.00, 2nd \$4.00, 3rd \$3.00

18PE Best dressed pet, no dogs



Baby Show



Event Information: Saturday, September 20, 2025, 9:30AM-12:00PM, Arena Stage

Chairperson: Lead Lydia Geerts, dlgeerts@live.com

General Rules

- All parents/guardians must pay admission to the fair,
- See general rules and regulations, which apply to this class.
- Baby's parent(s) must be a resident of Wainfleet, Port Colborne, or a Neighboring Community
- The committee will let you know if we are unable to accept your entry if too many are received, as no more than 10 babies will be accepted in each class.
- If a class is not filled, babies can be registered at the baby show.
- Contestants are responsible for being signed in and present 15 minutes before their class begins. Once a class starts, no more contestants will be allowed to participate.
- Baby's age taken as of September 20, 2025
- Please email Lydia Geerts (dlgeerts@live.com) with the baby's name, birth date, your name, address and phone number.
- Each class will be viewed prior to judging. Time of judging is given with each class listed. The judge will not enter into discussion with parents regarding babies. All decisions of the baby show judges are final; parents must agree to abide by them. The Winner in each class will be the baby with the greatest number of points. Points will be awarded by the nurse and other judges for personality on stage (smiling, happy disposition), general appearance (cleanliness, neatness, and outfit; expensive clothing not necessary), and health (weight and height according to the child's age.) The Nurse follows the World Health Organization Chart for Canada. While every precaution will be taken to protect the children who entered, The Wainfleet Agricultural Society will not be responsible for accidents.

Prizes: First place will receive a cash prize of \$10.00 and 2nd prize will receive \$5.00. Each Participant will receive a book for entering the Baby Show. First place will not be awarded in categories with two babies. 1st and 2nd place ribbons will be given out in each class dependent upon the number of babies entered.

1BA	Girls 24 months to 36 months	9:30AM
2BA	Boys 24 months to 36 months	9:45AM
3BA	Girls 18 months to 24 months	10:00AM
4BA	Boys 18 months to 24 months	10:15AM
5BA	Girls 12 months to 18 months	10:30AM
6BA	Boys 12 months to 18 months	10:45AM
7BA	Girls 6 months to 12 months	11:00AM
8BA	Boys 6 months to 12 months	11:15AM
9BA	Girls under 6 months	11:30AM
10BA	Boys under 6 months	11:40AM
11BA	Multiple births any age up to 36 months	11:50AM